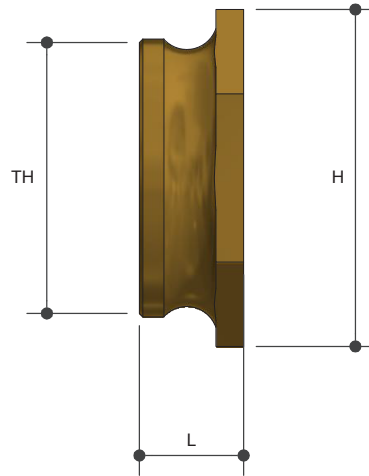
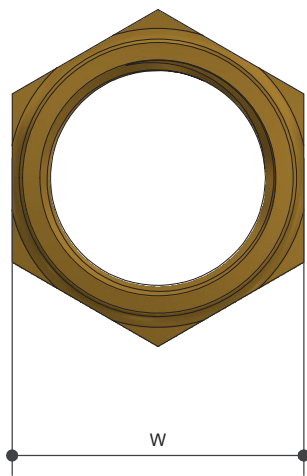


SCREWED BRASSWARE

Mouldable Tank Insert - Hexagon Type

Product Specifications

Metforge®
b r a s s w a r e



Specifications

Working temperature 0°C - 60°C

Maximum pressure rating 1600kPa

Sizing Chart (MM)

	L	H	W	TH
TN20	10	40	35	G 3/4"
TN25	15	48	42	G 1"



Features

Watermark Approved

DR Brass

Tested and certified to AS 3688

For more information on Metforge, contact:

Austworld 15 Activity Crescent, Molendinar, Queensland 4214 Australia

P. 1300 780 430

F. 1300 780 441

E. info@austworld.com.au

Austworld Pty Ltd. All rights reserved 2018. Austworld and Metforge are registered trade mark belonging to Austworld Pty Ltd.

AW
AUSTWORLD