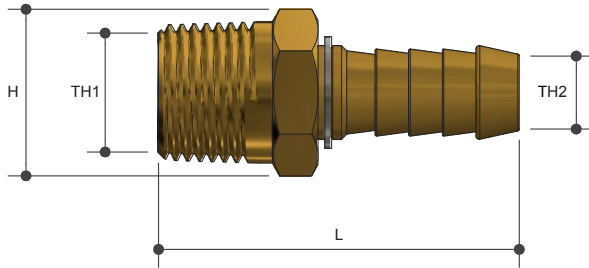
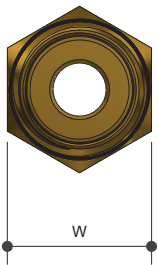


SCREWED BRASSWARE

Swivel Hose Barb MI

Product Specifications



Specifications

Maximum working temperature 1 °C to 60 °C

Maximum pressure rating 1600kPa

Material Chart

| Part | Material |
|-----------|-----------------|
| Nipple | Brass |
| Circlip | Stainless Steel |
| O-Ring | EPDM |
| Hose Barb | Brass |

Sizing Chart (MM)

| | L | H | W | TH1 | TH2 |
|--------|----|----|----|--------|------|
| SB0606 | 44 | 16 | 14 | R 1/4" | DN06 |
| SB0610 | 45 | 16 | 14 | R 1/4" | DN10 |
| SB1010 | 45 | 20 | 17 | R 3/8" | DN10 |
| SB1515 | 54 | 25 | 22 | R 1/2" | DN15 |
| SB2020 | 57 | 30 | 27 | R 3/4" | DN20 |
| SB2525 | 69 | 40 | 35 | R 1" | DN25 |

For more information on Metforge, contact:

Austworld 15 Activity Crescent, Molendinar, Queensland 4214 Australia

P. 1300 780 430

F. 1300 780 441

E. info@austworld.com.au

Austworld Pty Ltd. All rights reserved 2018. Austworld and Metforge are registered trade mark belonging to Austworld Pty Ltd.

