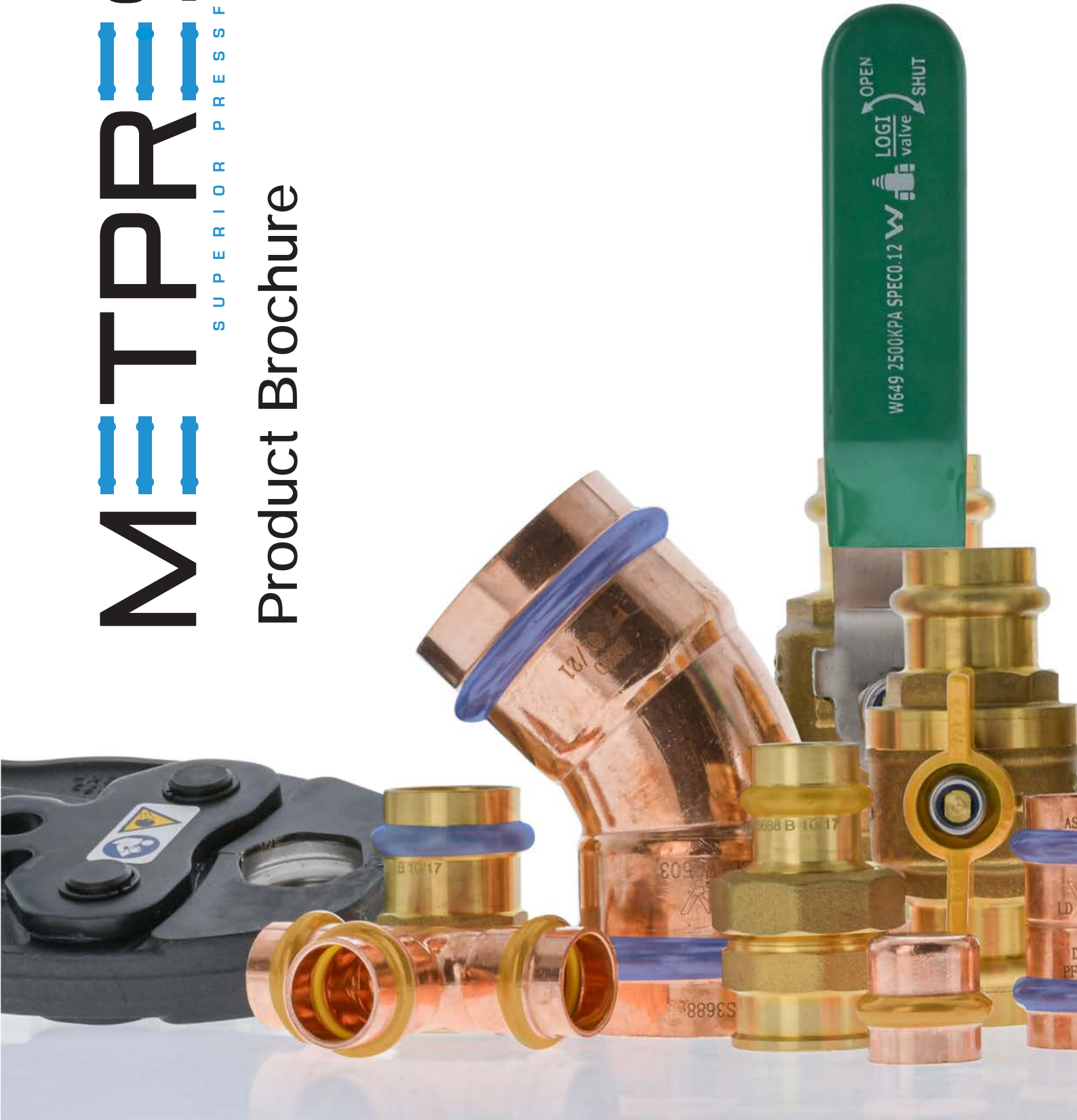


METPRESS™

SUPERIOR PRESSFIT SYSTEM

Product Brochure



Features and Benefits



Fixed Connection

Tamper free permanent joint.



Flame Free Connection

No soldering required.



Quality

All products come with a 25 year warranty on fittings and a 5 year warranty on ball valves with a design life of 50 years.



Leak Indicator

A unique design allows the transfer of water or air to pass the O-Ring of an unpressed fitting, enabling easy visual identification of an unpressed fitting during the commissioning stage.



Certification

All products are certified to AS3688-2016.



Reliability

Fast and cost effective to use, reducing installation cost.

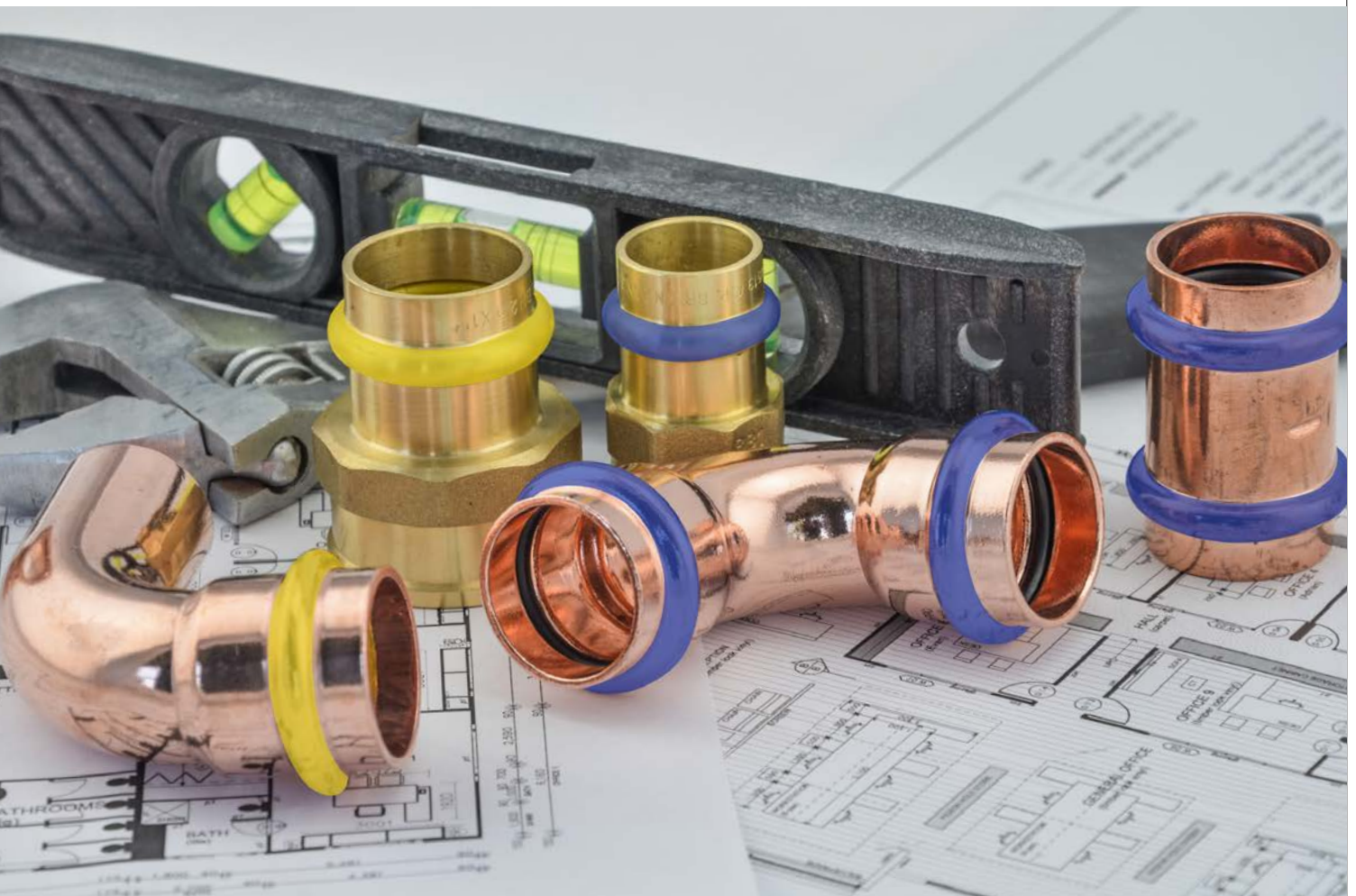
Overview

Reliable and Cost Effective

Austworld's Metpress Brass and Copper Fitting system range is one of the safest and most reliable brass pipe installation systems available for below and above ground applications.

Perfectly Australian by Design

Specifically created for the Australian market from high quality DZR brass material. The Metpress range is fast and simple to install, and covers a range of fittings from DN15 to DN25 and ball valves ranging from DN15 to DN50.



Work Smarter. Get it right first time.

Suitable for use with hard, half hard or annealed type A and B AS1432 compliant copper tubes. The Metpress copper range are factory-fitted with warning labels - a yellow HNBR pressed caution sleeve for gas applications or a brown FKM (brass) and black EPDM (copper) pressed caution sleeve for water applications.

Once the fitting has been pressed, the label can be removed for easy visual confirmation that the pressing process has been completed.

Technical Specifications

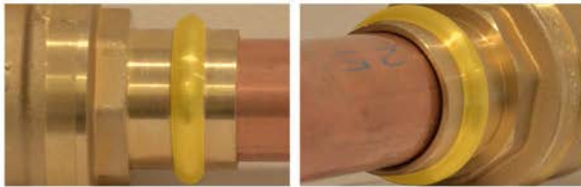
Copper Tube

Metpress is suitable for use with hard, half hard or annealed type A and B copper tubes complying with AS1432.

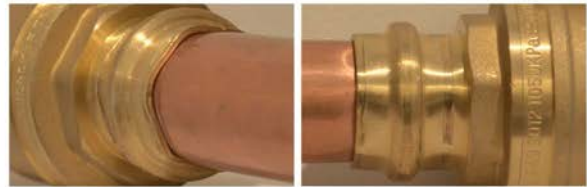
Please Note: All copper tube must be free from defects, sharp burrs and not display any form of corrosion. Carefully deburr the end of the tube inside to minimise turbulence and pressure loss according to AS3500 and on the outside to avoid damaging the O-Ring

Pressed Caution Sleeve

Metpress fittings are fitted with a warning label, once the fitting has been pressed, the sleeve can be removed for easy visual confirmation that the pressing process has been completed.















Unpressed



Pressed (After sleeve has been removed)

O-Ring

Metpress O-Rings are lubricated during manufacturing and need to be protected from foreign matter, this including, swarf, dirt and anything else that may harm the reliability of the product.

WATER		GAS	
BALL VALVES  		BALL VALVES  	
BRASS FITTINGS  		BRASS FITTINGS  	
COPPER FITTINGS  		COPPER FITTINGS  	

Technical Specifications

Leak Detector

Metpress O-Rings are made with special design the design has two flat parts which allows the transfer of water or air past the O-Ring of an unpressed fitting. This allows easy visual identification of an un pressed fitting during the commissioning stage.

To identify the unpressed fittings, simply pressurise the system with a pressure range of 100kPa to 500kPa for water and 1.6kPa for gas. (before final pressure testing).

All final testing should be done in accordance with AS/NZS 3500 and or AS/NZS 5601



Water

Metpress water fittings are manufactured in accordance with AS3688 – 2016, all Metpress water fittings are fitted with FKM (for ball valves and brass fittings), EPDM (for copper fittings) O-rings, making the system flexible to be used on potable and solar water installations up to 120°C, and are marked with a blue Pressed Caution Sleeve™.

For Solar System, compliant to AS/NZS 2712, AS3498 and AS3498:2009
Note: For rainwater installations, check compatibility of fittings with bore water prior to installation



Gas

Metpress gas fittings are manufactured in accordance with AS4617 – 2004, all Metpress gas fittings are fitted with HNBR O-rings and are marked with a yellow Pressed Caution Sleeve™.

Not Suitable for: Refrigeration and Air Condition Applications, Acetylene, Urea Solution, Methanol, Glycerin Triacetate, Coolant Inhibitor, Sodium Hydroxide, Ammoniac-gaseous.

Note: For information regarding suitability of Metpress fittings for additional applications contact Austworld customer service.



Technical Specifications

Fittings

Metpress copper and brass press systems are manufactured from high quality dezincification resistant brass, all fittings have an internal O-Ring made of high quality materials, HNBR for gas applications and FKM/EPDM for water and solar applications.

Metpress fittings are marked with the below colours to represent the applications designed for use.

O-RING COLOUR	APPLICATIONS
Brown (for Brass); Black (for copper)	Hot and cold potable water/ Solar/ Chilled water/ Fire services/ Compressed air (no oil)/ Rainwater
Yellow	Natural gas/ Liquid Gas/ Compressed air (oil), Engine oil/ Diesel

Please note: O-rings are not interchangeable across the different applications.

Fittings in Freezing Temperatures

Metpress fittings and copper tube should be safeguarded against freezing as the expansion and contraction of water when frozen can cause damage to pipes and fittings.

Connection to Other Materials

When connecting to existing material using a Metpress threaded adaptor, it is recommended that a threaded connection be installed first prior to being pressed. When tightening, ensure that the wrenching flats are used and not the tubular section of the fitting.

Testing and Commissioning

At the completion of a water service installation and prior to hydrostatic testing, the system shall be thoroughly flushed to remove any foreign matter. The flushing shall be undertaken in accordance with AS/NZS 3500.

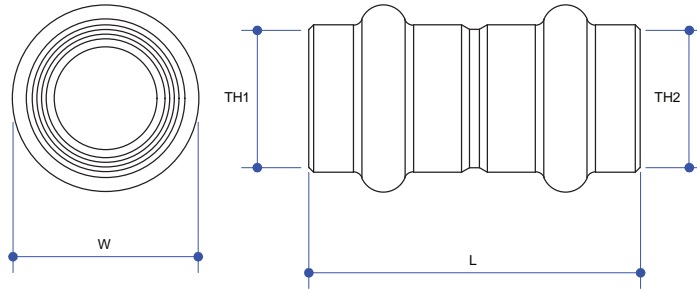
Potable water and gas installations must be tested for leakage in accordance with AS/NZS 3500 (water) and AS/NZS 5601 (gas).

Table of Content

01	Water Fittings - Copper
06	Water Fittings - Brass
11	Watermarked Pressfit Ball Valve
17	Gas Fittings - Copper
22	Gas Fittings - Brass
25	Gas Approved Pressfit Ball Valve
28	Certification
32	Warranty
33	Installation Instruction
35	FAQ

Water Fittings - Copper

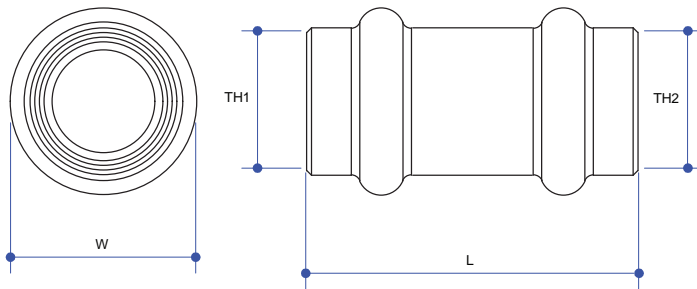
Coupling



CODE	L	W	TH1	TH2	FINISH	UNIT	PKT	BOX
PFW001	40	20	DN15	DN15	CU	EA	10	400
PFW002	48	27	DN20	DN20	CU	EA	10	200
PFW003	50	34	DN25	DN25	CU	EA	5	120
PFW004	54	41	DN32	DN32	CU	EA	5	70
PFW005	67	48.5	DN40	DN40	CU	EA	2	48
PFW006	83.5	62.5	DN50	DN50	CU	EA	2	24

Working Temperature -20°C to 90°C
Maximum Pressure Rating 2000 kPa

SLIP REPAIR COUPLING

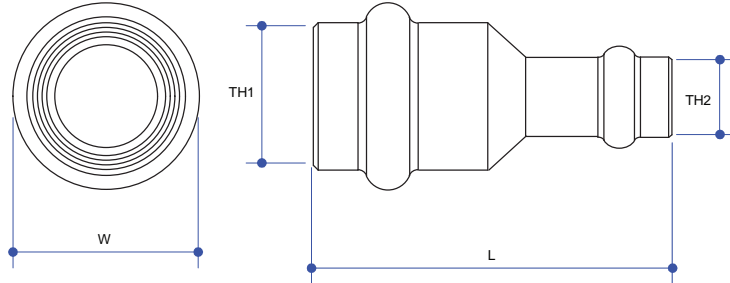


CODE	L	W	TH1	TH2	FINISH	UNIT	PKT	BOX
PFW010	40	20	DN15	DN15	CU	EA	10	400
PFW011	48	27	DN20	DN20	CU	EA	10	200
PFW012	50	34	DN25	DN25	CU	EA	5	120
PFW013	54	41	DN32	DN32	CU	EA	5	70
PFW014	67	48.5	DN40	DN40	CU	EA	2	48
PFW015	83.5	62.5	DN50	DN50	CU	EA	2	24

Working Temperature -20°C to 90°C
Maximum Pressure Rating 2000 kPa

Water Fittings - Copper

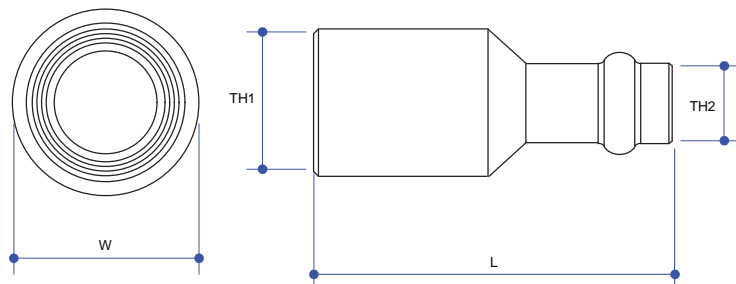
REDUCING COUPLING



CODE	L	W	TH1	TH2	FINISH	UNIT	PKT	BOX
PFW019	48	27	DN20	DN15	CU	EA	10	210
PFW020	54	34	DN25	DN15	CU	EA	5	155
PFW021	54	34	DN25	DN20	CU	EA	5	125
PFW022	63	41	DN32	DN20	CU	EA	5	105
PFW023	57	41	DN32	DN25	CU	EA	5	85
PFW024	71	48.5	DN40	DN20	CU	EA	2	50
PFW025	67	48.5	DN40	DN25	CU	EA	2	50
PFW026	66	48.5	DN40	DN32	CU	EA	2	50
PFW027	83	62.5	DN50	DN20	CU	EA	2	24
PFW028	84.5	62.5	DN50	DN25	CU	EA	2	24
PFW029	83.5	62.5	DN50	DN32	CU	EA	2	24
PFW030	85	62.5	DN50	DN40	CU	EA	2	24

Working Temperature -20°C to 90°C
Maximum Pressure Rating 2000 kPa

REDUCER M X F

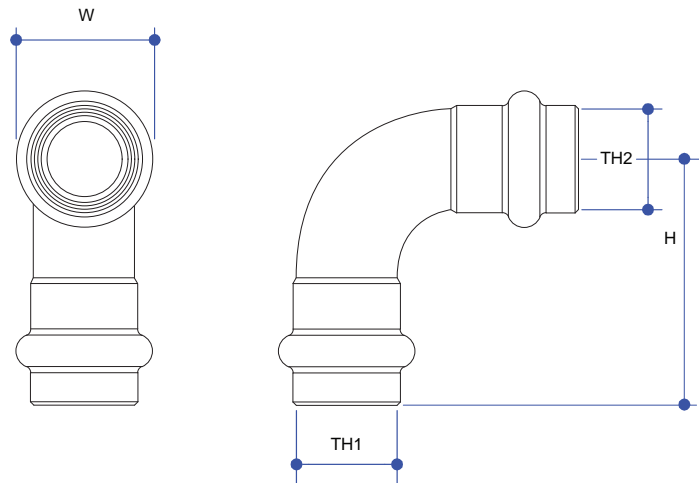


CODE	L	W	TH1	TH2	FINISH	UNIT	PKT	BOX
PFW041	50	27	DN20	DN15	CU	EA	10	210
PFW043	54	34	DN25	DN20	CU	EA	5	125
PFW044	62	41	DN32	DN20	CU	EA	5	105
PFW045	57	41	DN32	DN25	CU	EA	5	85
PFW046	68	48.5	DN40	DN25	CU	EA	5	60
PFW047	66	48.5	DN40	DN32	CU	EA	5	50
PFW049	83	62.5	DN50	DN32	CU	EA	5	40
PFW050	85	62.5	DN50	DN40	CU	EA	5	30

Working Temperature -20°C to 90°C
Maximum Pressure Rating 2000 kPa

Water Fittings - Copper

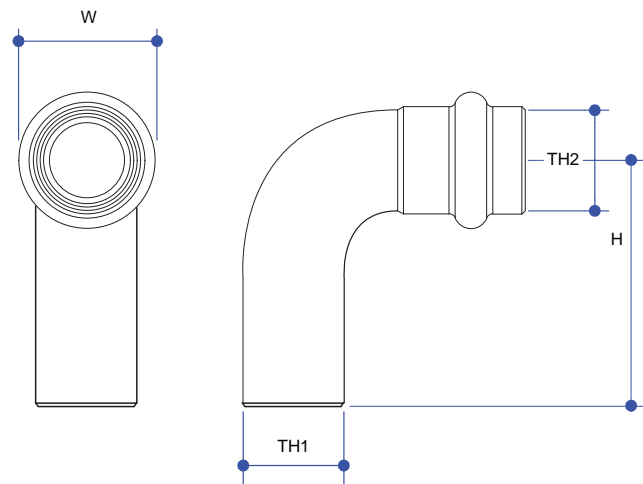
ELBOW 90° FI



CODE	H	W	TH1	TH2	FINISH	UNIT	PKT	BOX
PFW058	30.5	20	DN15	DN15	CU	EA	10	310
PFW059	42	27	DN20	DN20	CU	EA	10	160
PFW060	50	34	DN25	DN25	CU	EA	5	80
PFW061	59	41	DN32	DN32	CU	EA	5	40
PFW062	73	48.5	DN40	DN40	CU	EA	2	24
PFW063	95	62.5	DN50	DN50	CU	EA	2	12

Working Temperature -20°C to 90°C
Maximum Pressure Rating 2000 kPa

ELBOW 90° M X F

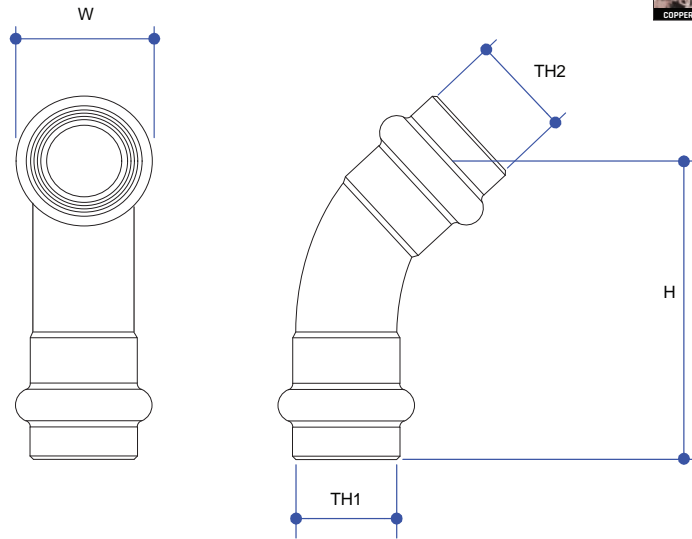


CODE	H	W	TH1	TH2	FINISH	UNIT	PKT	BOX
PFW067	29.5	20	DN15	DN15	CU	EA	5	315
PFW068	42	27	DN20	DN20	CU	EA	5	125
PFW069	50.5	34	DN25	DN25	CU	EA	5	70
PFW070	59	41	DN32	DN32	CU	EA	5	40
PFW071	73	48.5	DN40	DN40	CU	EA	2	20
PFW072	95	62.5	DN50	DN50	CU	EA	2	10

Working Temperature -20°C to 90°C
Maximum Pressure Rating 2000 kPa

Water Fittings - Copper

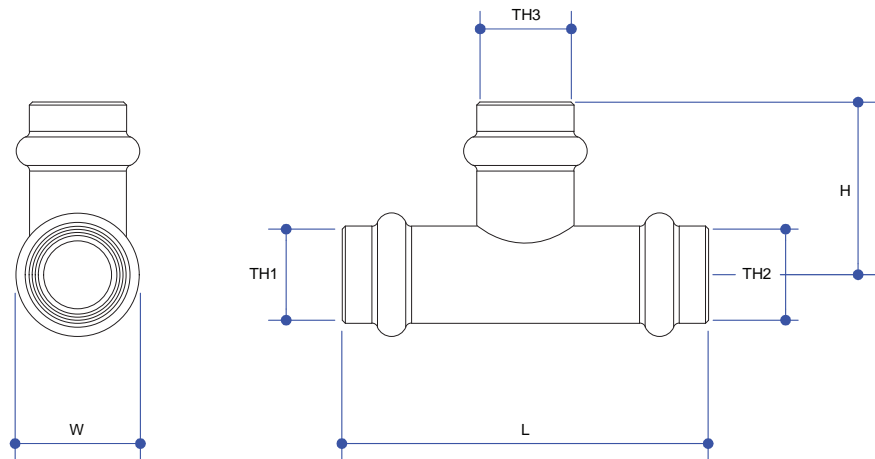
ELBOW 45° FI



CODE	H	W	TH1	TH2	FINISH	UNIT	PKT	BOX
PFW077	53	27	DN20	DN20	CU	EA	5	125
PFW078	58	34	DN25	DN25	CU	EA	5	105
PFW079	62	41	DN32	DN32	CU	EA	5	50
PFW080	78.5	48.5	DN40	DN40	CU	EA	2	40
PFW081	99	62.5	DN50	DN50	CU	EA	2	14

Working Temperature -20°C to 90°C
Maximum Pressure Rating 2000 kPa

TEE EQUAL END X END X BRANCH

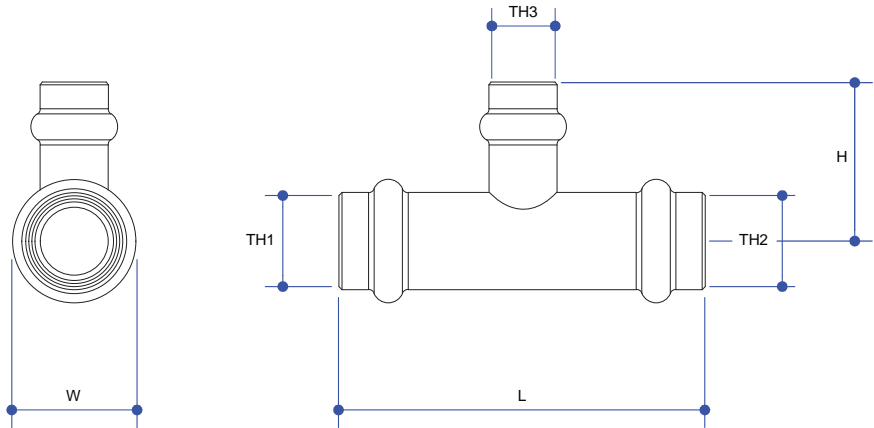


CODE	L	H	W	TH1	TH2	TH3	FINISH	UNIT	PKT	BOX
PFW094	60	28	20	DN15	DN15	DN15	CU	EA	10	210
PFW095	75	36	27	DN20	DN20	DN20	CU	EA	10	100
PFW096	85	42	34	DN25	DN25	DN25	CU	EA	5	50
PFW097	96	47	41	DN32	DN32	DN32	CU	EA	5	30
PFW098	112	56	48.5	DN40	DN40	DN40	CU	EA	2	20
PFW099	140	70	62.5	DN50	DN50	DN50	CU	EA	2	8

Working Temperature -20°C to 90°C
Maximum Pressure Rating 2000 kPa

Water Fittings - Copper

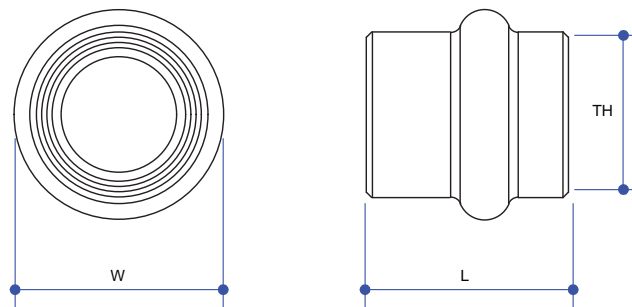
TEE REDUCING END X END X BRANCH



CODE	L	H	W	TH1	TH2	TH3	FINISH	UNIT	PKT	BOX
PFW103	71	32	27	DN20	DN15	DN15	CU	EA	10	120
PFW104	76	36	27	DN20	DN15	DN20	CU	EA	10	100
PFW105	70	32	27	DN20	DN20	DN15	CU	EA	10	100
PFW106	72	34.5	34	DN25	DN25	DN15	CU	EA	5	65
PFW107	80	38.5	34	DN25	DN25	DN20	CU	EA	5	65
PFW110	93	44	41	DN32	DN32	DN25	CU	EA	5	40
PFW113	107	52	48.5	DN40	DN40	DN32	CU	EA	2	24
PFW115	132	63.5	62.5	DN50	DN50	DN40	CU	EA	2	12

Working Temperature -20°C to 90°C
Maximum Pressure Rating 2000 kPa

END CAP

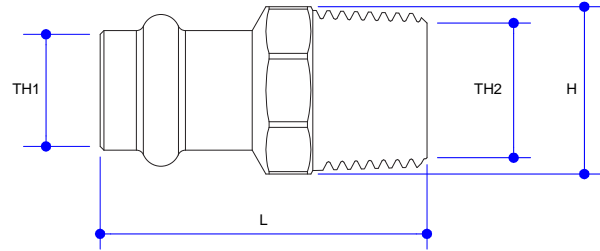
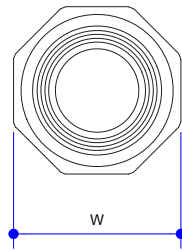
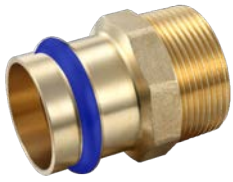


CODE	L	W	TH	FINISH	UNIT	PKT	BOX
PFW122	20	20	DN15	CU	EA	10	700
PFW123	24.5	27	DN20	CU	EA	10	350
PFW124	24.5	34	DN25	CU	EA	5	160
PFW125	28.5	41	DN32	CU	EA	5	80
PFW126	35	48.5	DN40	CU	EA	2	40
PFW127	42.5	62.5	DN50	CU	EA	2	30

Working Temperature -20°C to 90°C
Maximum Pressure Rating 2000 kPa

Water Fittings - Brass

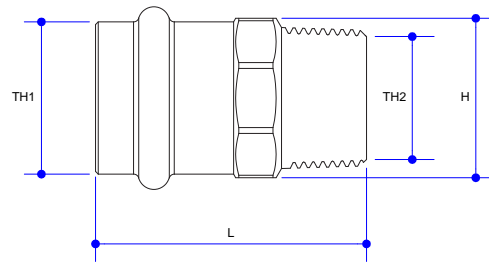
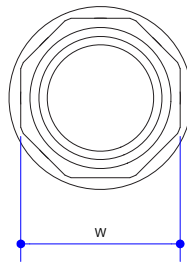
UNION MI



CODE	L	H	W	TH1	TH2	FINISH	UNIT	PKT	BOX
PFW140	43	22	22	DN15	R 1/2"	BR	EA	10	300
PFW141	49	29	27	DN20	R 3/4"	BR	EA	10	200
PFW142	55	36	34	DN25	R 1"	BR	EA	5	140
PFW143	57	46	43	DN32	R 1 1/4"	BR	EA	5	70
PFW144	43	23	22	DN40	R 1 1/2"	BR	EA	1	40
PFW145	43	24	22	DN50	R 2"	BR	EA	1	20

Working Temperature -20°C to 120°C
Maximum Pressure Rating 2000 kPa

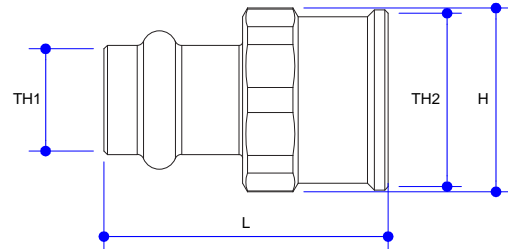
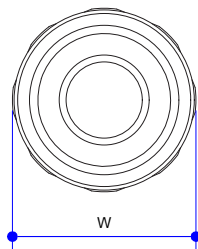
UNION MI REDUCING



CODE	L	H	W	TH1	TH2	FINISH	UNIT	PKT	BOX
PFW146	46	27	27	DN15	R 3/4"	BR	EA	10	200
PFW147	47	23	23	DN20	R 1/2"	BR	EA	10	250
PFW148	51	30	30	DN25	R 3/4"	BR	EA	5	150

Working Temperature -20°C to 120°C
Maximum Pressure Rating 2000 kPa

UNION FI



CODE	L	H	W	TH1	TH2	FINISH	UNIT	PKT	BOX
PFW149	41	27	27	DN15	Rp 1/2"	BR	EA	10	300
PFW150	46	31	31	DN20	Rp 3/4"	BR	EA	10	200
PFW151	49	39	39	DN25	Rp 1 1/4"	BR	EA	10	140
PFW152	53	50	50	DN32	Rp 1 1/4"	BR	EA	1	65
PFW153	59	57	57	DN40	Rp 1 1/2"	BR	EA	1	140
PFW154	65	64	64	DN50	Rp 2"	BR	EA	1	20

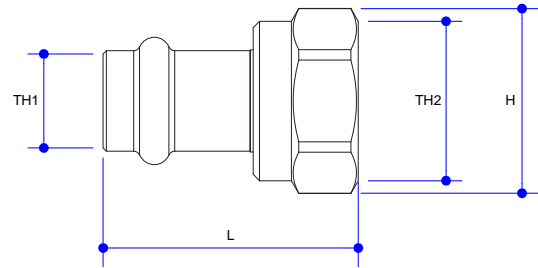
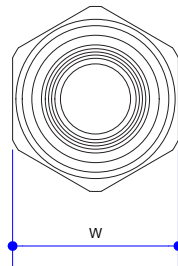
Working Temperature -20°C to 120°C
Maximum Pressure Rating 2000 kPa

Water Fittings - Brass

SWIVEL NUT ADAPTOR FI FLAT SEAT



* INCLUDES WASHER



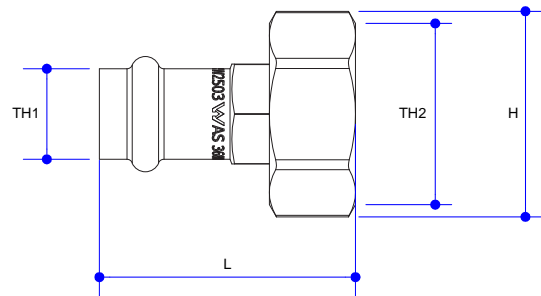
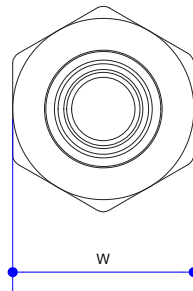
Working Temperature -20°C to 120°C
Maximum Pressure Rating 2000 kPa

CODE	L	H	W	TH1	TH2	FINISH	UNIT	PKT	BOX
PFW155	40	29	26	DN15	G 1/2"	BR	EA	5	250
PFW156	56	34	30	DN20	G 3/4"	BR	EA	10	150

SWIVEL NUT ADAPTOR FI REDUCING FLAT SEAT



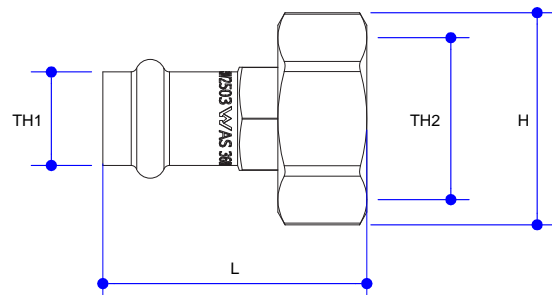
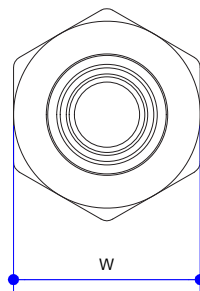
* INCLUDES WASHER



Working Temperature -20°C to 120°C
Maximum Pressure Rating 2000 kPa

CODE	L	H	W	TH1	TH2	FINISH	UNIT	PKT	BOX
PFW218	45	36	32	DN15	G 3/4"	BR	EA	10	200

SWIVEL NUT ADAPTOR FI REDUCING CONICAL SEAT

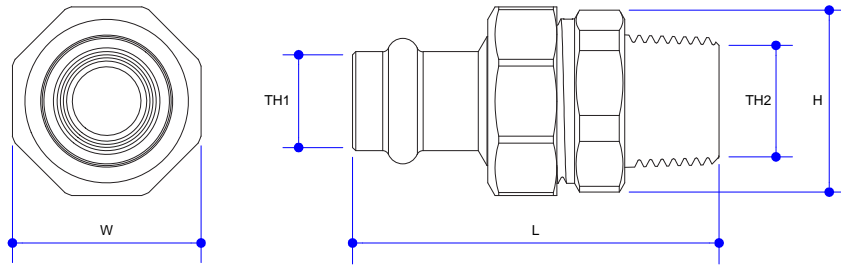
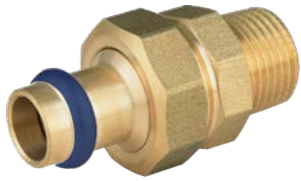


Working Temperature -20°C to 120°C
Maximum Pressure Rating 2000 kPa

CODE	L	H	W	TH1	TH2	FINISH	UNIT	PKT	BOX
PFW217	45	36	32	DN15	G 3/4"	BR	EA	10	250

Water Fittings - Brass

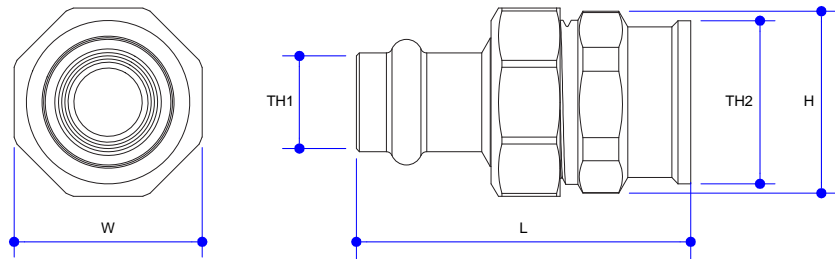
BARREL UNION MI



CODE	L	H	W	TH1	TH2	FINISH	UNIT	PKT	BOX
PFW159	58	29	30	DN15	R 1/2"	BR	EA	10	200
PFW160	68	36	37	DN20	R 3/4"	BR	EA	10	90
PFW161	78	46	45	DN25	R 1"	BR	EA	5	50

Working Temperature -20°C to 120°C
Maximum Pressure Rating 2000 kPa

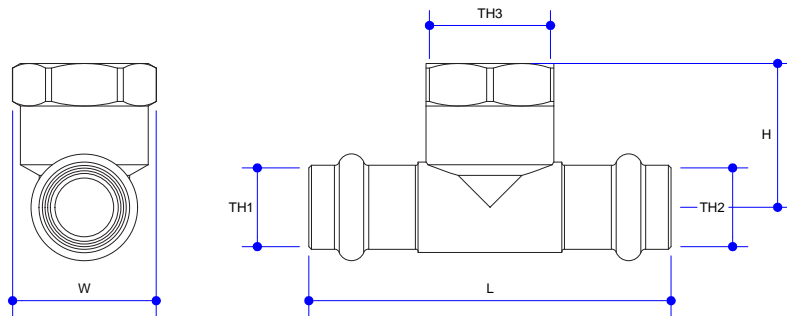
BARREL UNION FI



CODE	L	H	W	TH1	TH2	FINISH	UNIT	PKT	BOX
PFW165	53	29	30	DN15	Rp 1/2"	BR	EA	10	200
PFW166	61	33	37	DN20	Rp 3/4"	BR	EA	10	90
PFW167	68	43	46	DN25	Rp 1"	BR	EA	5	50

Working Temperature -20°C to 120°C
Maximum Pressure Rating 2000 kPa

TEE FI

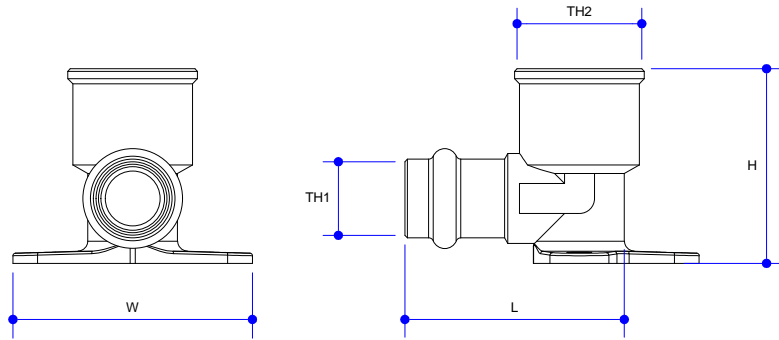


CODE	L	H	W	TH1	TH2	TH3	FINISH	UNIT	PKT	BOX
PFW171	68	27	27	DN15	DN15	Rp 1/2"	BR	EA	10	200
PFW172	81	29	30	DN20	DN20	Rp 3/4"	BR	EA	5	100
PFW173	94	36	42	DN25	DN25	Rp 1"	BR	EA	5	50

Working Temperature -20°C to 120°C
Maximum Pressure Rating 2000 kPa

Water Fittings - Brass

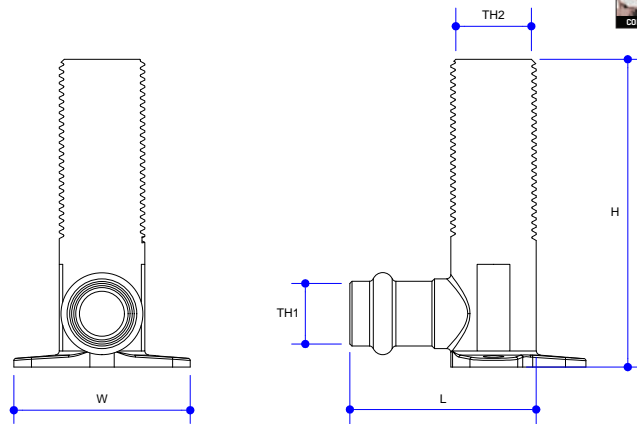
ELBOW FI LUGGED



Working Temperature -20°C to 120°C
Maximum Pressure Rating 2000 kPa

CODE	L	H	W	TH1	TH2	FINISH	UNIT	PKT	BOX
PFW183	44	39	48	DN15	Rp 1/2"	BR	EA	10	150
PFW184	54	47	54	DN20	Rp 3/4"	BR	EA	5	120

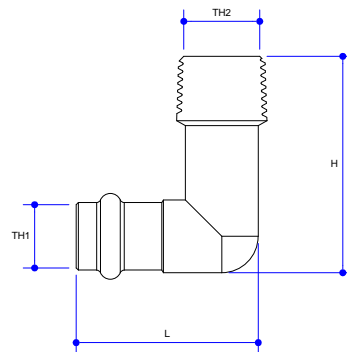
ELBOW MI LUGGED



Working Temperature -20°C to 120°C
Maximum Pressure Rating 2000 kPa

CODE	L	H	W	TH1	TH2	FINISH	UNIT	PKT	BOX
PFW185	35	75	43	DN15	G 1/2"	BR	EA	5	80
PFW186	35	90	43	DN15	G 1/2"	BR	EA	5	80
PFW187	35	95	43	DN15	G 1/2"	BR	EA	5	80
PFW188	40	90	43	DN20	G 1/2"	BR	EA	5	80
PFW189	44	90	47	DN20	G 3/4"	BR	EA	5	50

ELBOW MI

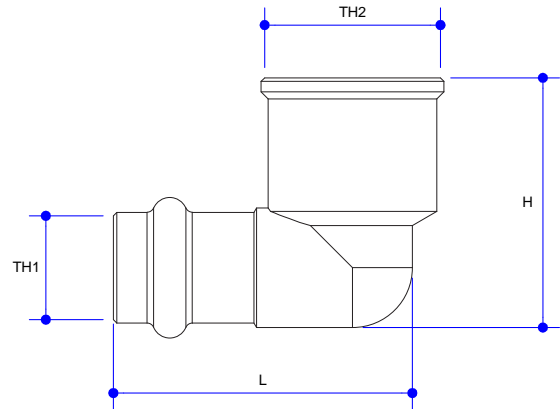
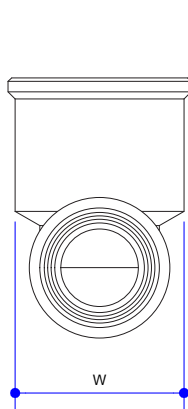


Working Temperature -20°C to 120°C
Maximum Pressure Rating 2000 kPa

CODE	L	H	W	TH1	TH2	FINISH	UNIT	PKT	BOX
PFW190	42	50	20	DN15	R 1/2"	BR	EA	10	200
PFW191	53	43	27	DN20	R 3/4"	BR	EA	5	150
PFW192	63	55	34	DN25	R 1"	BR	EA	5	70

Water Fittings - Brass

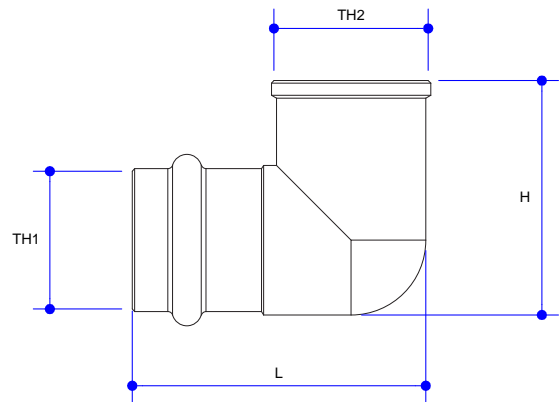
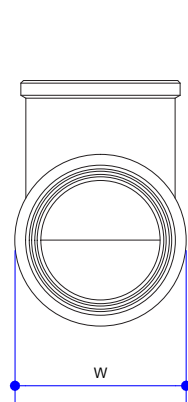
ELBOW FI



Working Temperature -20°C to 120°C
Maximum Pressure Rating 2000 kPa

CODE	L	H	W	TH1	TH2	FINISH	UNIT	PKT	BOX
PFW201	42	35	24	DN15	Rp 1/2"	BR	EA	10	200
PFW202	52	42	30	DN20	Rp 3/4"	BR	EA	5	150
PFW203	62	51	38	DN25	Rp 1"	BR	EA	5	70

ELBOW FI REDUCING

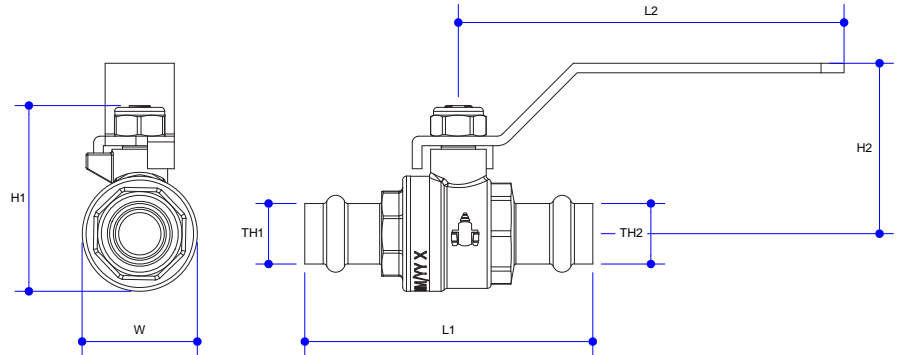


Working Temperature -20°C to 120°C
Maximum Pressure Rating 2000 kPa

CODE	L	H	W	TH1	TH2	FINISH	UNIT	PKT	BOX
PFW207	59	47	34	DN25	Rp 3/4"	BR	EA	5	100

Watermarked Pressfit Ball Valve

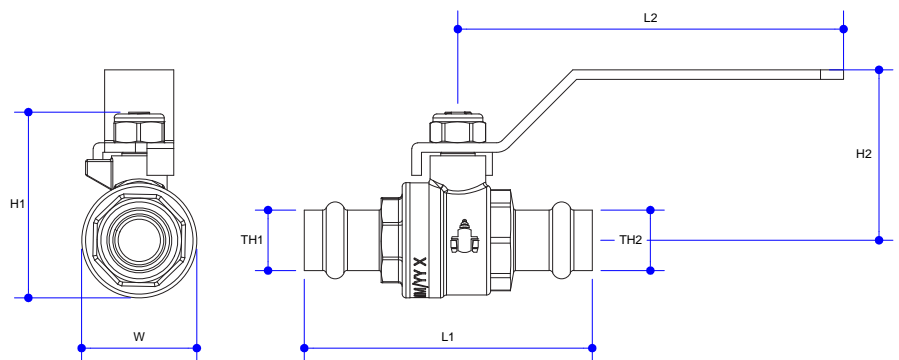
LEVER HANDLE PRESS FIT CU X CU



CODE	L1	L2	H1	H2	W	TH1	TH2	FINISH	UNIT	PKT	BOX
WP15	75	101	48	44	30	DN15	DN15	BR	EA	10	100
WP20	87	101	55	48	37	DN20	DN20	BR	EA	8	80
WP25	101	101	64	52	46	DN25	DN25	BR	EA	5	40
WP32	114	140	80	71	58	DN32	DN32	BR	EA	3	24
WP40	135	140	92	77	69	DN40	DN40	BR	EA	2	16
WP50	163	140	108	85	84	DN50	DN50	BR	EA	1	8

Working Temperature 1°C to 95°C
Maximum Pressure Rating 2500 kPa

LEVER HANDLE PRESS FIT CU X CU - LILAC

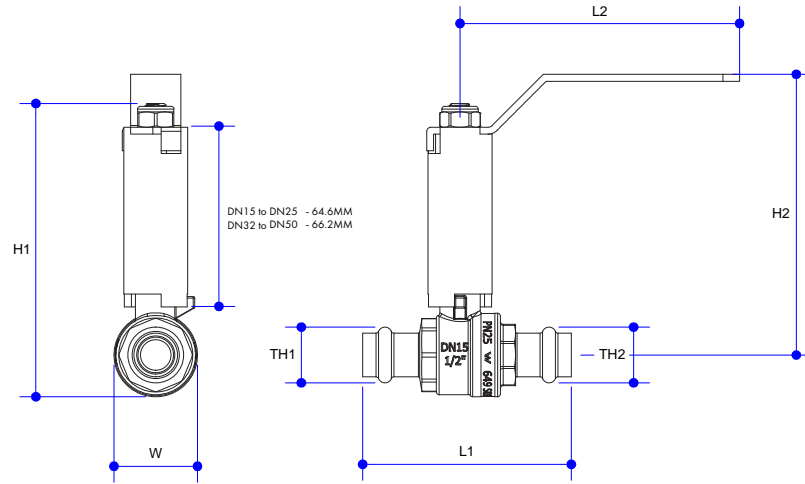


CODE	L1	L2	H1	H2	W	TH1	TH2	FINISH	UNIT	PKT	BOX
WP15L	75	101	48	44	30	DN15	DN15	BR	EA	10	100
WP20L	87	101	55	48	37	DN20	DN20	BR	EA	8	80
WP25L	101	101	64	52	46	DN25	DN25	BR	EA	5	40
WP32L	114	140	80	71	58	DN32	DN32	BR	EA	3	24
WP40L	135	140	92	77	69	DN40	DN40	BR	EA	2	16
WP50L	163	140	108	85	84	DN50	DN50	BR	EA	1	8

Working Temperature 1°C to 95°C
Maximum Pressure Rating 2500 kPa

Watermarked Pressfit Ball Valve

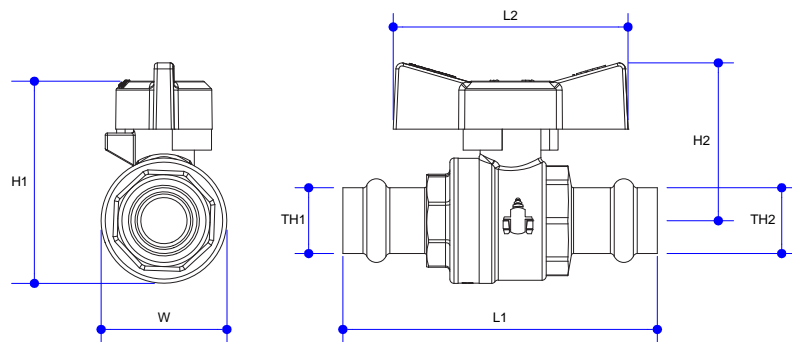
LEVER HANDLE PRESS FIT CU X CU EXTENDED SPINDLE



CODE	L1	L2	H1	H2	W	TH1	TH2	FINISH	UNIT	PKT	BOX
EXTWP15	75	101	105	101	30	DN15	DN15	BR	EA	6	60
EXTWP20	87	101	112	104	37	DN20	DN20	BR	EA	4	40
EXTWP25	101	101	121	108	46	DN25	DN25	BR	EA	4	32
EXTWP32	114	140	136	127	58	DN32	DN32	BR	EA	3	24
EXTWP40	135	140	147	132	69	DN40	DN40	BR	EA	2	12
EXTWP50	163	140	163	141	84	DN50	DN50	BR	EA	2	8

Working Temperature 1°C to 95°C
Maximum Pressure Rating 2500 kPa

BUTTERFLY HANDLE PRESS FIT CU X CU

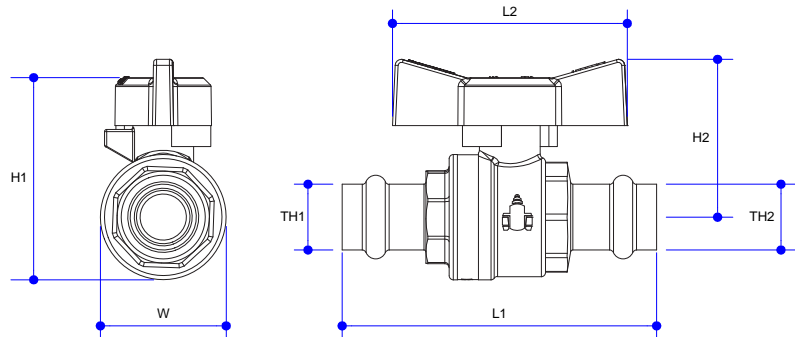


CODE	L1	L2	H1	H2	W	TH1	TH2	FINISH	UNIT	PKT	BOX
WBWP15	75	56	48	38	30	DN15	DN15	BR	EA	10	100
WBWP20	87	56	55	41	37	DN20	DN20	BR	EA	8	80
WBWP25	101	56	64	45	46	DN25	DN25	BR	EA	5	40

Working Temperature 1°C to 95°C
Maximum Pressure Rating 2500 kPa

Watermarked Pressfit Ball Valve

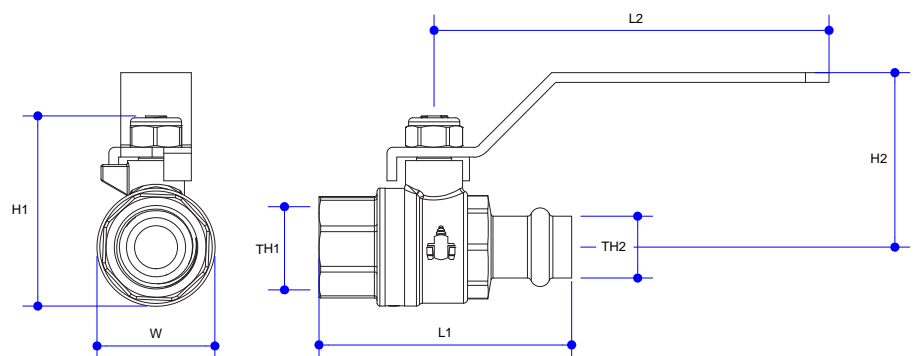
BUTTERFLY HANDLE PRESS FIT CU X CU - LILAC



CODE	L1	L2	H1	H2	W	TH1	TH2	FINISH	UNIT	PKT	BOX
WBWP15L	75	56	48	38	30	DN15	DN15	BR	EA	10	100
WBWP20L	87	56	55	41	37	DN20	DN20	BR	EA	10	80
WBWP25L	101	56	64	45	46	DN25	DN25	BR	EA	5	40

Working Temperature 1°C to 95°C
Maximum Pressure Rating 2500 kPa

LEVER HANDLE PRESS FIT CU X FI

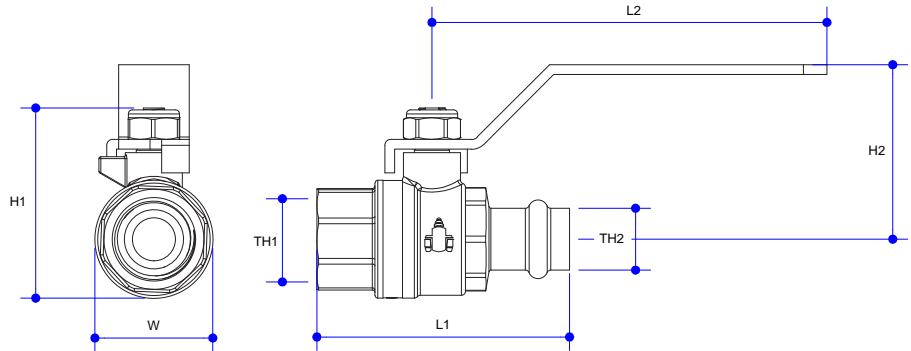


CODE	L1	L2	H1	H2	W	TH1	TH2	FINISH	UNIT	PKT	BOX
WP15F	64	101	48	44	30	Rp 1/2"	DN15	BR	EA	10	100
WP20F	73	101	55	48	37	Rp 3/4"	DN20	BR	EA	8	80
WP25F	89	101	64	52	46	Rp 1"	DN25	BR	EA	5	40
WP32F	98	140	80	71	58	Rp 1 1/4"	DN32	BR	EA	3	24
WP40F	115	140	92	77	69	Rp 1 1/2"	DN40	BR	EA	2	16
WP50F	138	140	108	85	84	Rp 2"	DN50	BR	EA	1	8

Working Temperature 1°C to 95°C
Maximum Pressure Rating 2500 kPa

Watermarked Pressfit Ball Valve

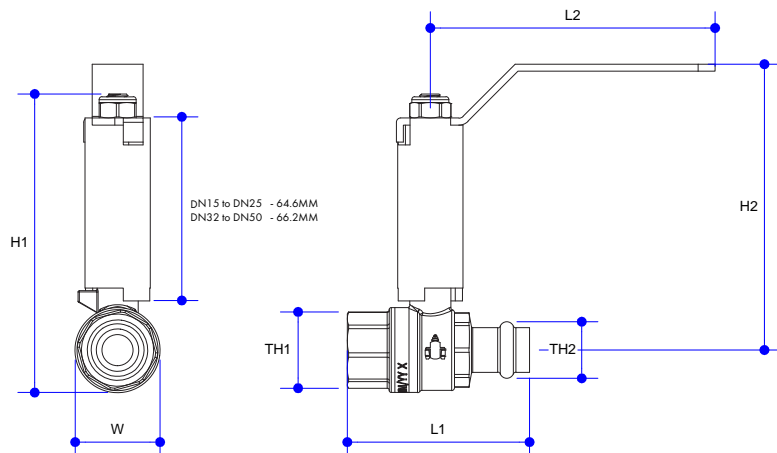
LEVER HANDLE PRESS FIT CU X FI - LILAC



CODE	L1	L2	H1	H2	W	TH1	TH2	FINISH	UNIT	PKT	BOX
WP15LF	64	101	48	44	30	Rp 1/2"	DN15	BR	EA	10	100
WP20LF	73	101	55	48	37	Rp 3/4"	DN20	BR	EA	8	80
WP25LF	89	101	64	52	46	Rp 1"	DN25	BR	EA	5	40
WP32LF	98	140	80	71	58	Rp 1 1/4"	DN32	BR	EA	3	24
WP40LF	115	140	92	77	69	Rp 1 1/2"	DN40	BR	EA	2	16
WP50LF	138	140	108	85	84	Rp 2"	DN50	BR	EA	1	8

Working Temperature 1°C to 95°C
Maximum Pressure Rating 2500 kPa

LEVER HANDLE PRESS FIT CU X FI EXTENDED SPINDLE

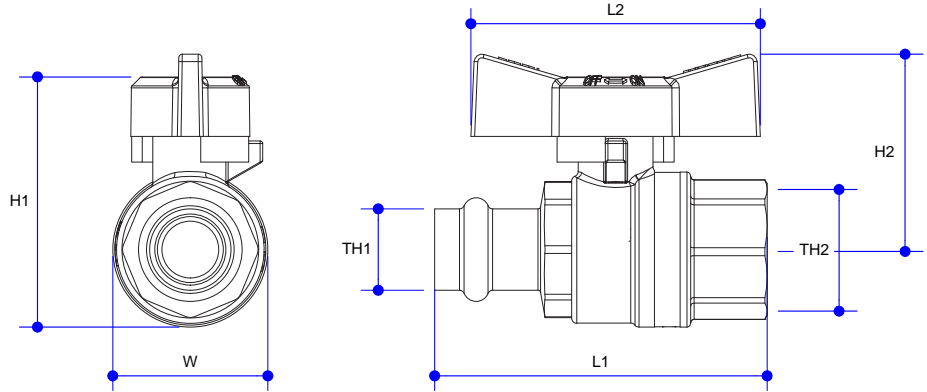


CODE	L1	L2	H1	H2	W	TH1	TH2	FINISH	UNIT	PKT	BOX
EXTWP15F	64	101	105	101	30	Rp 1/2"	DN15	BR	EA	6	60
EXTWP20F	73	101	112	104	37	Rp 3/4"	DN20	BR	EA	4	40
EXTWP25F	89	101	121	108	46	Rp 1"	DN25	BR	EA	4	32
EXTWP32F	98	140	136	127	58	Rp 1 1/4"	DN32	BR	EA	3	24
EXTWP40F	115	140	147	132	69	Rp 1 1/2"	DN40	BR	EA	2	12
EXTWP50F	138	140	163	141	84	Rp 2"	DN50	BR	EA	2	8

Working Temperature 1°C to 95°C
Maximum Pressure Rating 2500 kPa

Watermarked Pressfit Ball Valve

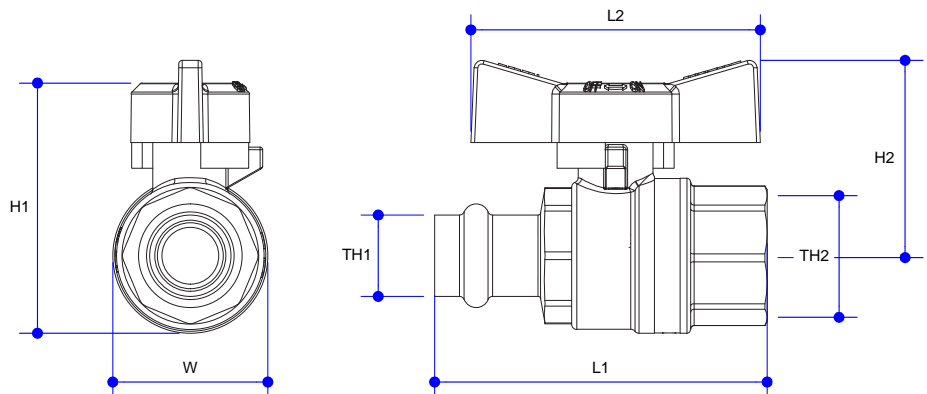
BUTTERFLY HANDLE PRESS FIT CU X FI



Working Temperature 1°C to 95°C
Maximum Pressure Rating 2500 kPa

CODE	L1	L2	H1	H2	W	TH1	TH2	FINISH	UNIT	PKT	BOX
WBWP15F	64	56	48	38	30	DN15	Rp 1/2"	BR	EA	10	100
WBWP20F	73	56	55	41	37	DN20	Rp 3/4"	BR	EA	8	80
WBWP25F	89	56	64	45	46	DN25	Rp 1"	BR	EA	5	40

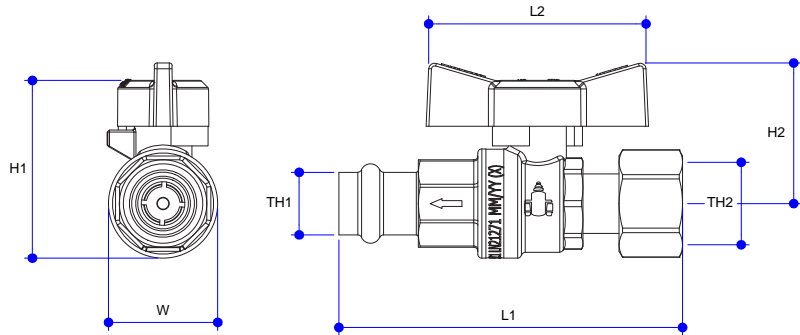
BUTTERFLY HANDLE PRESS FIT CU X FI - LILAC



Working Temperature 1°C to 95°C
Maximum Pressure Rating 2500 kPa

CODE	L1	L2	H1	H2	W	TH1	TH2	FINISH	UNIT	PKT	BOX
WBWP15LF	64	56	48	38	30	DN15	Rp 1/2"	BR	EA	10	100
WBWP20LF	73	56	55	41	37	DN20	Rp 3/4"	BR	EA	8	80
WBWP25LF	89	56	64	45	46	DN25	Rp 1"	BR	EA	5	40

Non Return Isolation Pressfit Ball Valve

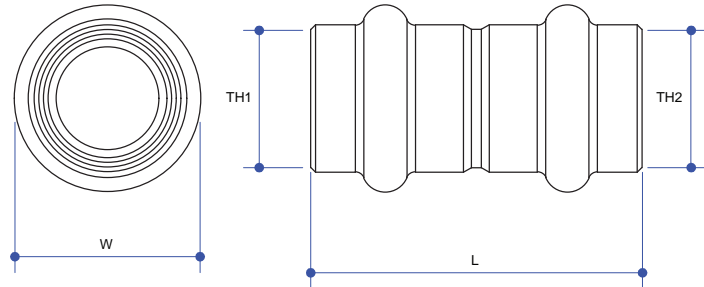


Working temperature 1°C to 90°C
Maximum pressure rating 1400 kPa

CODE	L1	L2	H1	H2	W	TH1	TH2	FINISH	UNIT	PKT	BOX
WDF15SPF	87	56	45	35	27	Rp 1/2"	G 1/2"	BR	EA	1	80

Gas Fittings - Copper

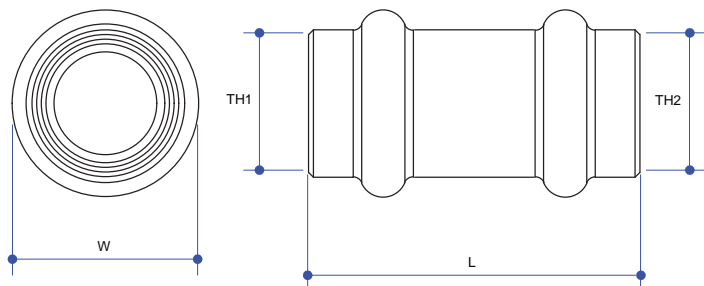
COUPLING



Working Temperature -20°C to 70°C
Maximum Pressure Rating 1600 kPa

CODE	L	W	TH1	TH2	FINISH	UNIT	PKT	BOX
PFG001	40	20	DN15	DN15	CU	EA	10	400
PFG002	48	27	DN20	DN20	CU	EA	10	200
PFG003	50	34	DN25	DN25	CU	EA	5	120
PFG004	54	41	DN32	DN32	CU	EA	5	70
PFG005	67	48.5	DN40	DN40	CU	EA	2	48
PFG006	83.5	62.5	DN50	DN50	CU	EA	2	24

SLIP REPAIR COUPLING

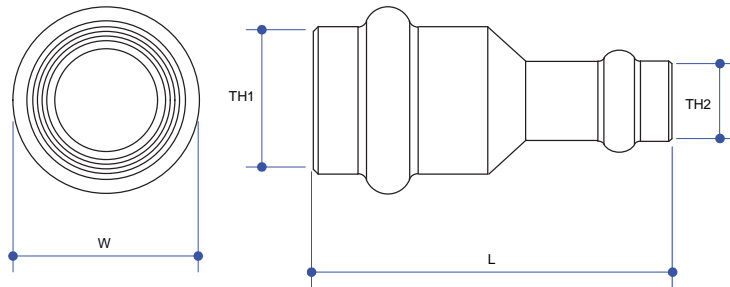
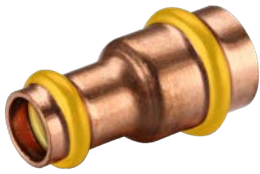


Working Temperature -20°C to 70°C
Maximum Pressure Rating 1600 kPa

CODE	L	W	TH1	TH2	FINISH	UNIT	PKT	BOX
PFG010	40	20	DN15	DN15	CU	EA	10	400
PFG011	48	27	DN20	DN20	CU	EA	10	200
PFG012	50	34	DN25	DN25	CU	EA	5	120
PFG013	54	41	DN32	DN32	CU	EA	5	70
PFG014	67	48.5	DN40	DN40	CU	EA	2	48
PFG015	83.5	62.5	DN50	DN50	CU	EA	2	24

Gas Fittings - Copper

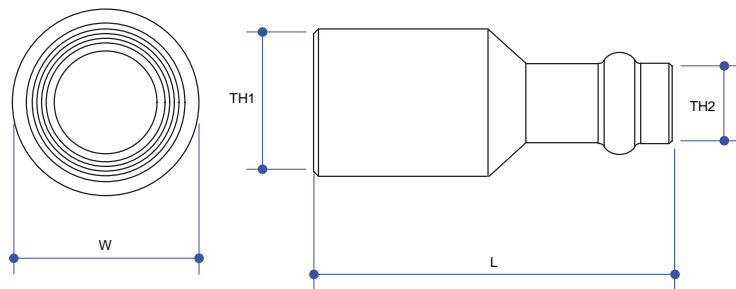
REDUCING COUPLING



Working Temperature -20°C to 70°C
Maximum Pressure Rating 1600 kPa

CODE	L	W	TH1	TH2	FINISH	UNIT	PKT	BOX
PFG019	48	27	DN20	DN15	CU	EA	10	210
PFG020	54	34	DN25	DN15	CU	EA	5	155
PFG021	54	34	DN25	DN20	CU	EA	5	125
PFG022	63	41	DN32	DN20	CU	EA	5	105
PFG023	57	41	DN32	DN25	CU	EA	5	85
PFG026	66	48.5	DN40	DN32	CU	EA	2	50
PFG030	85	62.5	DN50	DN40	CU	EA	2	24

REDUCER M X F

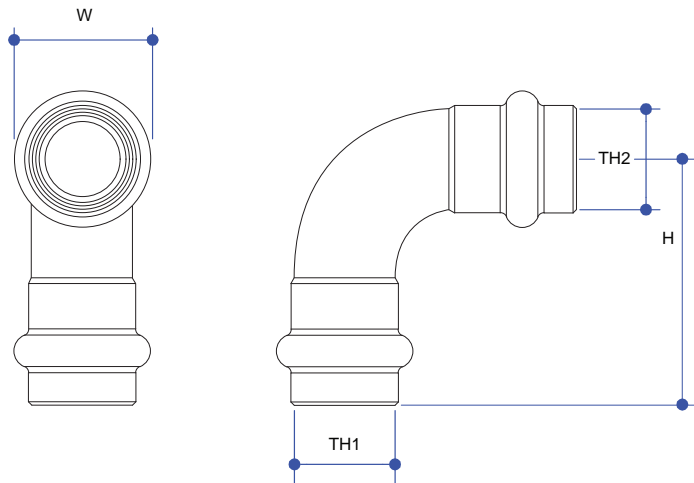


Working Temperature -20°C to 70°C
Maximum Pressure Rating 1600 kPa

CODE	L	W	TH1	TH2	FINISH	UNIT	PKT	BOX
PFG041	50	27	DN20	DN15	CU	EA	10	210
PFG043	54	34	DN25	DN20	CU	EA	5	125
PFG044	62	41	DN32	DN20	CU	EA	5	105
PFG045	57	41	DN32	DN25	CU	EA	5	85
PFG046	68	48.5	DN40	DN25	CU	EA	5	60
PFG047	66	48.5	DN40	DN32	CU	EA	5	50
PFG049	83	62.5	DN50	DN32	CU	EA	5	40
PFG050	85	62.5	DN50	DN40	CU	EA	5	30

Gas Fittings - Copper

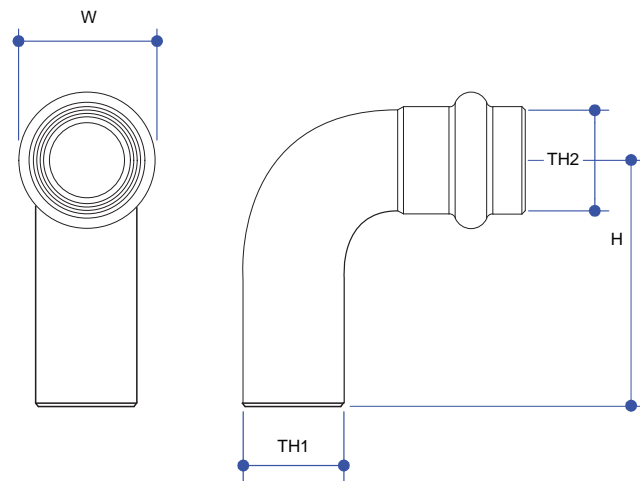
ELBOW 90° FI



CODE	H	W	TH1	TH2	FINISH	UNIT	PKT	BOX
PFG058	30.5	20	DN15	DN15	CU	EA	10	310
PFG059	42	27	DN20	DN20	CU	EA	10	160
PFG060	50	34	DN25	DN25	CU	EA	5	80
PFG061	59	41	DN32	DN32	CU	EA	5	40
PFG062	73	48.5	DN40	DN40	CU	EA	2	24
PFG063	95	62.5	DN50	DN50	CU	EA	2	12

Working Temperature -20°C to 70°C
Maximum Pressure Rating 1600 kPa

ELBOW 90° M X F

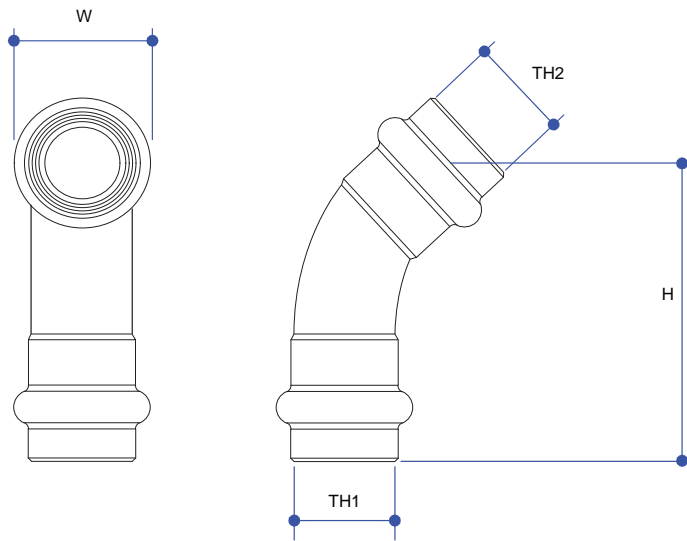


CODE	H	W	TH1	TH2	FINISH	UNIT	PKT	BOX
PFG067	29.5	20	DN15	DN15	CU	EA	5	315
PFG068	42	27	DN20	DN20	CU	EA	5	125
PFG069	50.5	34	DN25	DN25	CU	EA	5	70

Working Temperature -20°C to 70°C
Maximum Pressure Rating 1600 kPa

Gas Fittings - Copper

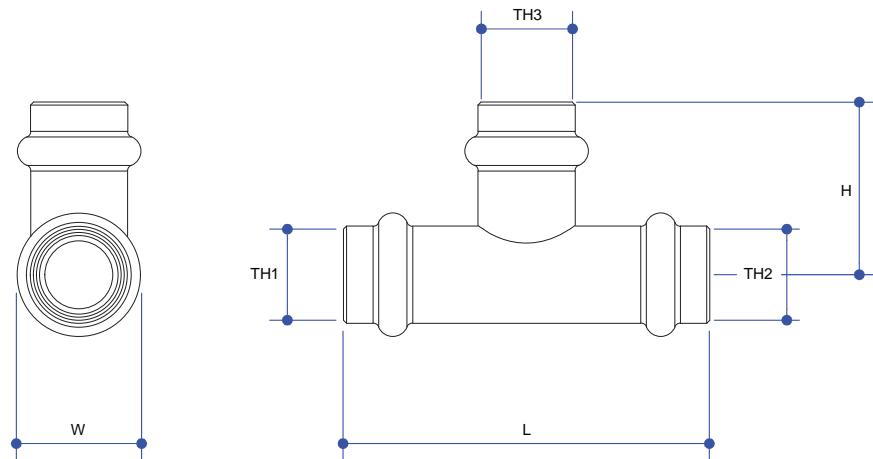
ELBOW 45° FI



CODE	H	W	TH1	TH2	FINISH	UNIT	PKT	BOX
PFG077	53	27	DN20	DN20	CU	EA	5	125
PFG078	58	34	DN25	DN25	CU	EA	5	105
PFG079	62	41	DN32	DN32	CU	EA	5	50
PFG080	78.5	48.5	DN40	DN40	CU	EA	2	40
PFG081	99	62.5	DN50	DN50	CU	EA	2	14

Working Temperature -20°C to 70°C
Maximum Pressure Rating 1600 kPa

TEE EQUAL END X END X BRANCH

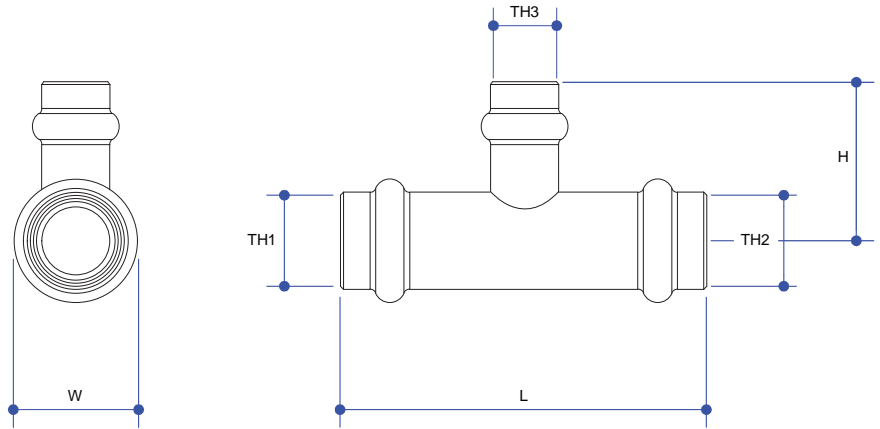


CODE	L	H	W	TH1	TH2	TH3	FINISH	UNIT	PKT	BOX
PFG094	60	28	20	DN15	DN15	DN15	CU	EA	10	210
PFG095	75	36	27	DN20	DN20	DN20	CU	EA	10	100
PFG096	85	42	34	DN25	DN25	DN25	CU	EA	5	50
PFG097	96	47	41	DN32	DN32	DN32	CU	EA	5	30
PFG098	112	56	48.5	DN40	DN40	DN40	CU	EA	2	20
PFG099	140	70	62.5	DN50	DN50	DN50	CU	EA	2	8

Working Temperature -20°C to 70°C
Maximum Pressure Rating 1600 kPa

Gas Fittings - Copper

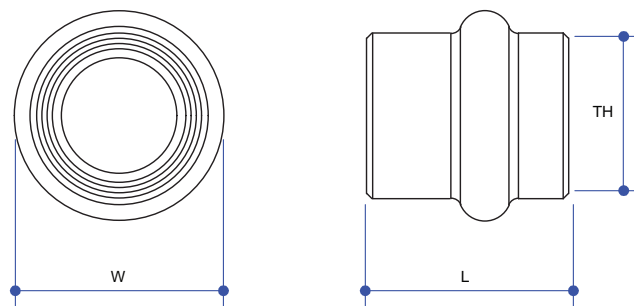
TEE REDUCING END X END X BRANCH



CODE	L	H	W	TH1	TH2	TH3	FINISH	UNIT	PKT	BOX
PFG103	71	32	27	DN20	DN15	DN15	CU	EA	10	120
PFG104	76	36	27	DN20	DN15	DN20	CU	EA	10	100
PFG105	70	32	27	DN20	DN20	DN15	CU	EA	10	100
PFG107	80	38.5	34	DN25	DN25	DN20	CU	EA	5	65
PFG110	93	44	41	DN32	DN32	DN25	CU	EA	5	40
PFG113	107	52	48.5	DN40	DN40	DN32	CU	EA	2	24
PFG115	132	63.5	62.5	DN50	DN50	DN40	CU	EA	2	12

Working Temperature -20°C to 70°C
Maximum Pressure Rating 1600 kPa

END CAP

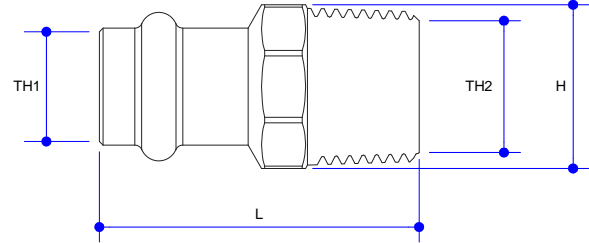
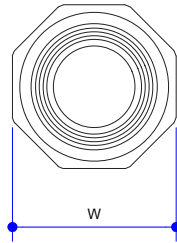


CODE	L	W	TH	FINISH	UNIT	PKT	BOX
PFG122	20	20	DN15	CU	EA	10	700
PFG123	24.5	27	DN20	CU	EA	10	350
PFG124	24.5	34	DN25	CU	EA	5	160
PFG125	28.5	41	DN32	CU	EA	5	80
PFG126	35	48.5	DN40	CU	EA	2	40
PFG127	42.5	62.5	DN50	CU	EA	2	30

Working Temperature -20°C to 70°C
Maximum Pressure Rating 1600 kPa

Gas Fittings - Brass

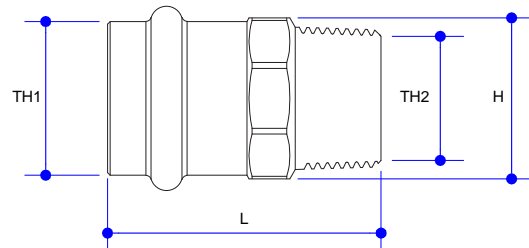
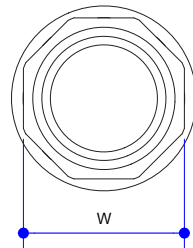
UNION MI



Working Temperature -40°C to 120°C
Maximum Pressure Rating 1600 kPa

CODE	L	H	W	TH1	TH2	FINISH	UNIT	PKT	BOX
PFG140	43	22	22	DN15	R 1/2"	BR	EA	10	300
PFG141	49	29	27	DN20	R 3/4"	BR	EA	10	200
PFG142	55	36	34	DN25	R 1"	BR	EA	5	140

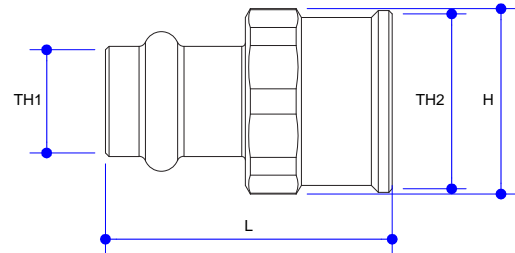
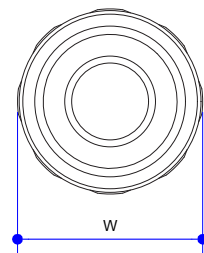
UNION MI REDUCING



Working Temperature -40°C to 120°C
Maximum Pressure Rating 1600 kPa

CODE	L	H	W	TH1	TH2	FINISH	UNIT	PKT	BOX
PFG148	51	30	30	DN25	R 3/4"	BR	EA	5	150

UNION FI

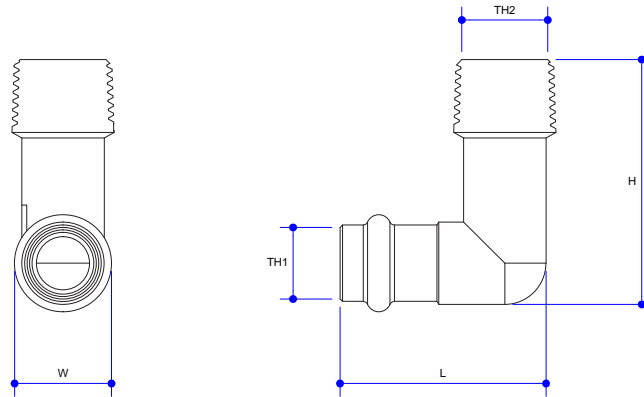


Working Temperature -40°C to 120°C
Maximum Pressure Rating 1600 kPa

CODE	L	H	W	TH1	TH2	FINISH	UNIT	PKT	BOX
PFG149	41	27	27	DN15	Rp 1/2"	BR	EA	10	300
PFG150	45	31	31	DN20	Rp 3/4"	BR	EA	10	200
PFG151	49	39	39	DN25	Rp 1"	BR	EA	10	140

Gas Fittings - Brass

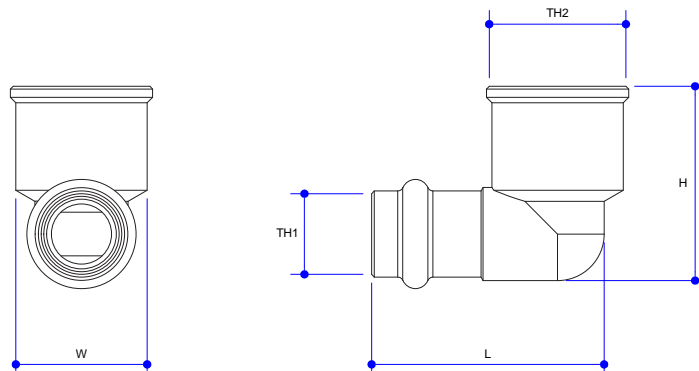
ELBOW MI



CODE	L	H	W	TH1	TH2	FINISH	UNIT	PKT	BOX
PFG197	42	50	20	DN15	R 1/2"	BR	EA	10	200
PFG198	54	44	27	DN20	R 3/4"	BR	EA	5	150
PFG199	63	55	34	DN25	R 1"	BR	EA	5	70

Working Temperature -40°C to 120°C
Maximum Pressure Rating 1600 kPa

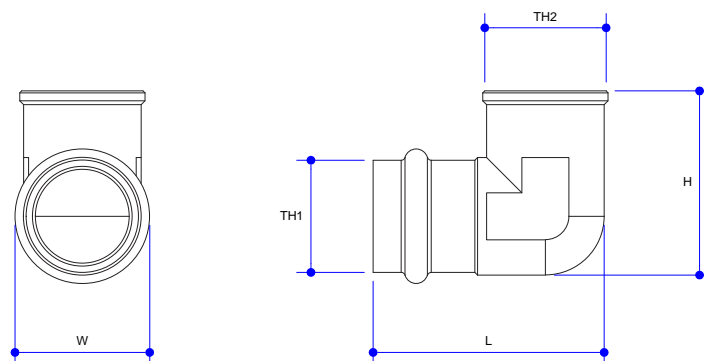
ELBOW FI



CODE	L	H	W	TH1	TH2	FINISH	UNIT	PKT	BOX
PFG204	42	35	24	DN15	Rp 1/2"	BR	EA	10	200
PFG205	52	41	30	DN20	Rp 3/4"	BR	EA	5	150
PFG206	62	51	38	DN25	Rp 1"	BR	EA	5	70

Working Temperature -40°C to 120°C
Maximum Pressure Rating 1600 kPa

ELBOW FI REDUCING

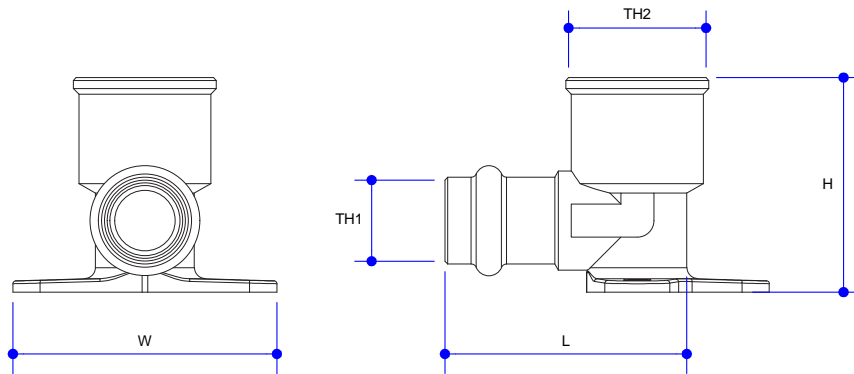


CODE	L	H	W	TH1	TH2	FINISH	UNIT	PKT	BOX
PFG210	44	32	34	DN25	G 3/4"	BR	EA	5	100

Working Temperature -40°C to 120°C
Maximum Pressure Rating 1600 kPa

Gas Fittings - Brass

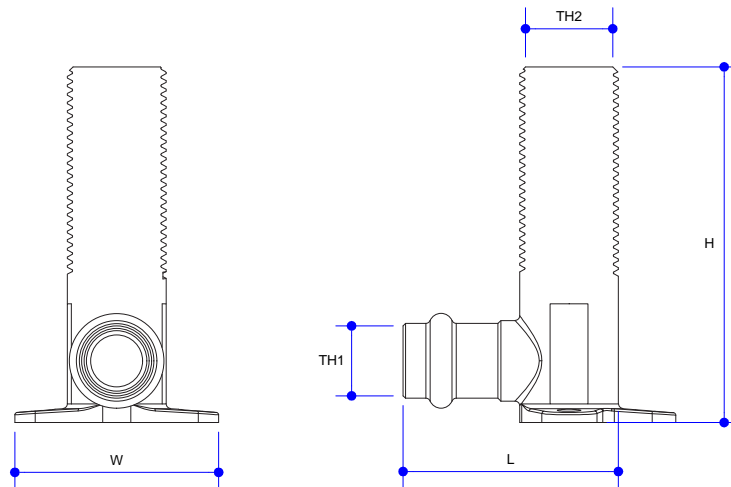
ELBOW FI LUGGED



Working Temperature -40°C to 120°C
Maximum Pressure Rating 1600 kPa

CODE	L	H	W	TH1	TH2	FINISH	UNIT	PKT	BOX
PFG183	44	39	48	DN15	Rp 1/2"	BR	EA	10	150
PFG184	54	47	54	DN20	Rp 3/4"	BR	EA	5	120

ELBOW MI LUGGED

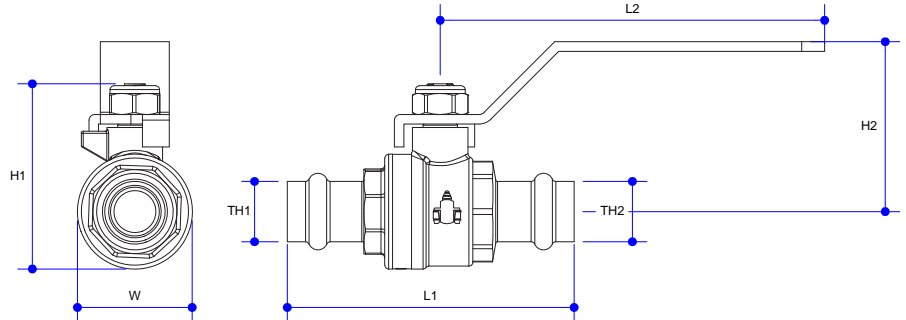


Working Temperature -40°C to 120°C
Maximum Pressure Rating 1600 kPa

CODE	L	H	W	TH1	TH2	FINISH	UNIT	PKT	BOX
PFG188	45	75	43	DN20	G 1/2"	BR	EA	5	80
PFG189	57	89	47	DN20	G 3/4"	BR	EA	5	50

Gas Approved Pressfit Ball Valve

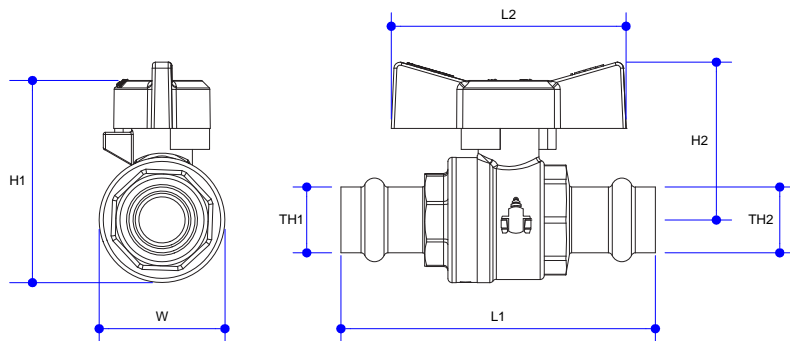
LEVER HANDLE PRESS FIT CU X CU



CODE	L1	L2	H1	H2	W	TH1	TH2	FINISH	UNIT	PKT	BOX
GP15	75	101	48	44	30	DN15	DN15	BR	EA	10	100
GP20	87	101	55	48	37	DN20	DN20	BR	EA	5	80
GP25	101	101	64	52	46	DN25	DN25	BR	EA	5	40
GP32	114	140	80	71	58	DN32	DN32	BR	EA	3	24
GP40	135	140	92	77	69	DN40	DN40	BR	EA	2	16
GP50	163	140	108	85	84	DN50	DN50	BR	EA	1	8

Working Temperature 1°C to 120°C
Maximum Pressure Rating 2100 kPa

BUTTERFLY HANDLE PRESS FIT CU X CU

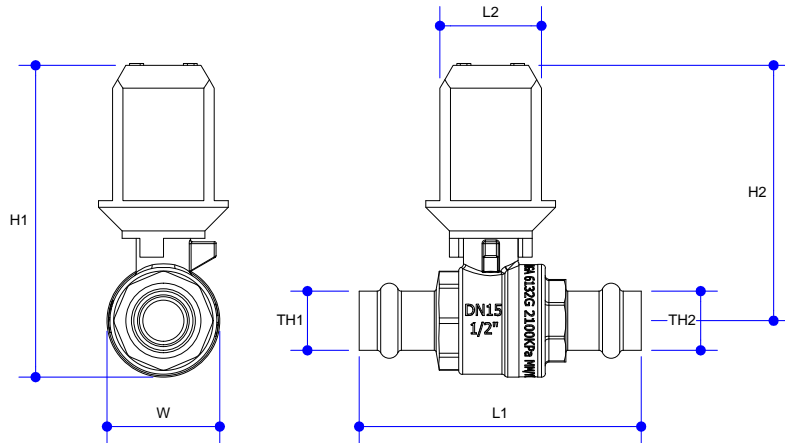


CODE	L1	L2	H1	H2	W	TH1	TH2	FINISH	UNIT	PKT	BOX
WBG15	75	56	48	44	30	DN15	DN15	BR	EA	10	100
WBG20	87	56	55	48	37	DN20	DN20	BR	EA	5	80
WBG25	101	56	64	52	46	DN25	DN25	BR	EA	5	40

Working Temperature 1°C to 120°C
Maximum Pressure Rating 2100 kPa

Gas Approved Pressfit Ball Valve

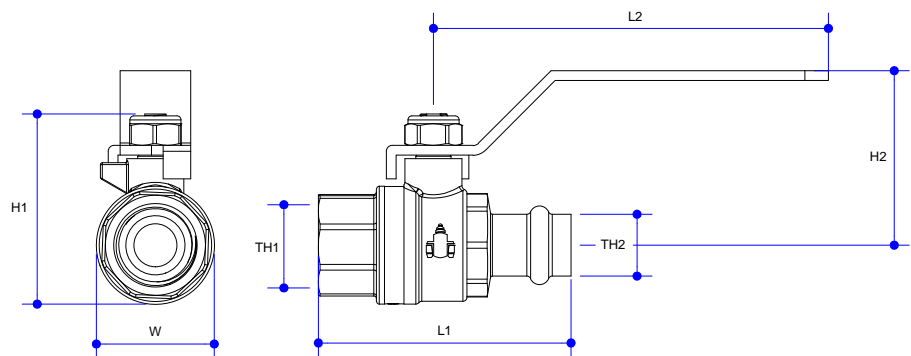
UNDERGROUND PRESS FIT CU X CU



Working Temperature 1°C to 120°C
Maximum Pressure Rating 2100 kPa

CODE	L1	L2	H1	H2	W	TH1	TH2	FINISH	UNIT	PKT	BOX
UGPV15	75	27	83	68	30	DN15	DN15	BR	EA	15	60
UGPV20	87	27	90	71	37	DN20	DN20	BR	EA	12	48
UGPV25	101	27	98	75	46	DN25	DN25	BR	EA	8	32
UGPV32	114	27	112	84	58	DN32	DN32	BR	EA	4	24
UGPV40	135	27	124	89	69	DN40	DN40	BR	EA	3	12
UGPV50	163	27	140	98	84	DN50	DN50	BR	EA	2	8

LEVER HANDLE PRESS FIT CU X FI

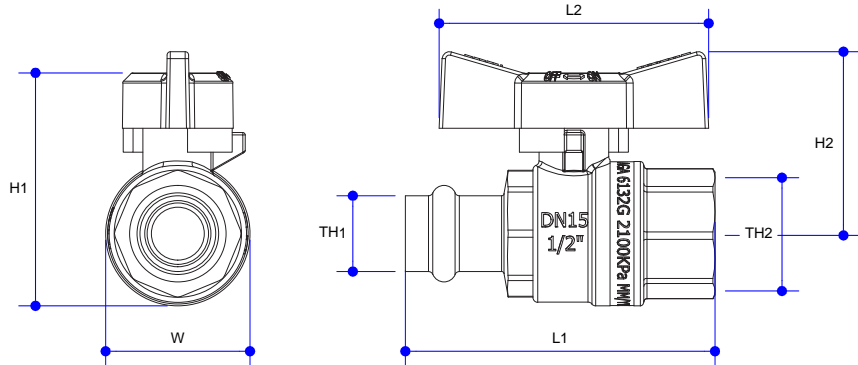


Working Temperature 1°C to 120°C
Maximum Pressure Rating 2100 kPa

CODE	L1	L2	H1	H2	W	TH1	TH2	FINISH	UNIT	PKT	BOX
GP15F	64	101	48	44	30	Rp 1/2"	DN15	BR	EA	10	100
GP20F	73	101	55	48	37	Rp 3/4"	DN20	BR	EA	5	80
GP25F	89	101	64	52	46	Rp 1"	DN25	BR	EA	5	40
GP32F	98	140	80	71	58	Rp 1 1/4"	DN32	BR	EA	3	24
GP40F	115	140	92	77	69	Rp 1 1/2"	DN40	BR	EA	2	16
GP50F	138	140	108	85	84	Rp 2"	DN50	BR	EA	1	8

Gas Approved Pressfit Ball Valve

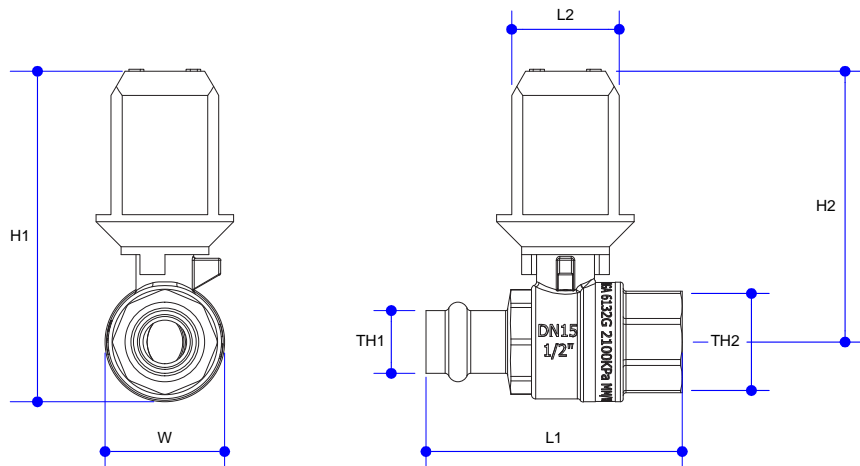
BUTTERFLY HANDLE PRESS FIT CU X FI



CODE	L1	L2	H1	H2	W	TH1	TH2	FINISH	UNIT	PKT	BOX
WBG15F	64	56	48	38	30	DN15	Rp 1/2"	BR	EA	10	100
WBG20F	73	56	55	41	37	DN20	Rp 3/4"	BR	EA	5	40
WBG25F	89	56	64	45	46	DN25	Rp 1"	BR	EA	5	40

Working Temperature 1°C to 120°C
Maximum Pressure Rating 2100 kPa

UNDERGROUND PRESS FIT CU X FI



CODE	L1	L2	H1	H2	W	TH1	TH2	FINISH	UNIT	PKT	BOX
UGPV15F	64	27	83	68	30	DN15	Rp 1/2"	BR	EA	15	60
UGPV20F	73	27	90	71	37	DN20	Rp 3/4"	BR	EA	12	48
UGPV25F	89	27	98	75	46	DN25	Rp 1"	BR	EA	8	32
UGPV32F	98	27	112	84	58	DN32	Rp 1 1/4"	BR	EA	4	24
UGPV40F	115	27	124	89	69	DN40	Rp 1 1/2"	BR	EA	3	12
UGPV50F	138	27	140	98	84	DN50	Rp 2"	BR	EA	2	8

Working Temperature 1°C to 120°C
Maximum Pressure Rating 2100 kPa



WaterMark Certificate of Conformity

Australian Certification Services Pty Ltd grants to the WaterMark Approved User:

Logi Dezign

Trading as Logi Dezign

the right to use the WaterMark as shown above in conjunction with the Certificate No. on product/s as identified in the WaterMark Schedule and as listed on the WaterMark database www.abcb.gov.au/Product-Certification/WaterMark-Certification-Scheme which have been shown to comply with the appropriate Applicable Specification referred to below and as amended from time to time. The WaterMark User is granted a licence to use the WaterMark subject to the rules governing the use of the WaterMark.

Product Type:	Ball Valves
Product Use:	Water Supply
Brand:	LOGI VALVE
Certification Specification/s:	WMTS 012:2018 In-line valves for use in plumbing water supply systems— Miscellaneous types metallic and nonmetallic AS 4796:2016 Water supply—Metal-bodied and plastic bodied ball valves for property service connection

Issue Date	6 th December 2019
Initial Issue Date:	24 th July 2012
Expiry Date:	13 th December 2023

Paul Greig
General Manager

Certificate No.: 649

This Certificate is issued by a JAS-ANZ accredited certification body. The ABCB and JAS-ANZ do not in any way warrant, guarantee or represent that the product the subject of this Certificate conforms to the WaterMark Certification Scheme Rules, nor accepts any liability arising out of the use of the product. The ABCB disclaims to the extent permitted by law, all liability (including negligence) for claims of losses, expenses, damages and costs arising as a result of the use of the product(s) referred to in this Certificate. The WaterMark Certification Scheme is a conformity assessment scheme based on ISO/IEC 17067. This Certificate may only be reproduced in its entirety



WaterMark Certificate of Conformity

Australian Certification Services Pty Ltd grants to the WaterMark Approved User:

Logi Dezign

Trading as Logi Dezign

the right to use the WaterMark as shown above in conjunction with the Certificate No. on product/s as identified in the WaterMark Schedule and as listed on the WaterMark database www.abcb.gov.au/Product-Certification/WaterMark-Certification-Scheme which have been shown to comply with the appropriate Applicable Specification referred to below and as amended from time to time. The WaterMark User is granted a licence to use the WaterMark subject to the rules governing the use of the WaterMark.

Product Type: Copper/Copper Alloy Fittings
Product Use: Water Supply
Brand: METFORGE/LD/METPRESS
Certification Specification/s: AS 3688:2016 Water supply and gas systems—Metallic fittings and end connectors

Issue Date: 15th November 2019
Initial Issue Date: 14th November 2012
Expiry Date: 13th December 2023

Paul Greig
General Manager

Certificate No.: 2503

This Certificate is issued by a JAS-ANZ accredited certification body. The ABCB and JAS-ANZ do not in any way warrant, guarantee or represent that the product the subject of this Certificate conforms to the WaterMark Certification Scheme Rules, nor accepts any liability arising out of the use of the product. The ABCB disclaims to the extent permitted by law, all liability (including negligence) for claims of losses, expenses, damages and costs arising as a result of the use of the product(s) referred to in this Certificate. The WaterMark Certification Scheme is a conformity assessment scheme based on ISO/IEC 17067. This Certificate may only be reproduced in its entirety



AGA CERTIFIED PRODUCT

Certificate Holder: **AUSTWORLD COMMODITIES PTY LTD**

ABN/ACN No. (if applicable): **006 882 631**

Manufacturer: **Austworld Commodities Pty Ltd**

Agent (if applicable): **N/A**

Type of Component: **Manual Shut-Off Valves**
MWP:2100 kPa
Working Temperature Range -20°C -120°C

Model No. & Description: **LOGI**
(Refer www.aga.asn.au for more details) **Refer to page 2 for model designations**

Relevant Standard(s): **AS 4617 – 2004**
(Incorporating Amendment Nos. 1 & 2)

This is to certify that the particular **COMPONENT** specifically described herein and supplied to The Australian Gas Association (hereafter called the AGA) by the Certificate Holder named above has been subject to "type-testing" and assessed by the AGA to comply with the requirements of the AGA's Product Certification Scheme for Type Tested Gas Products.

This Certificate is issued on the express conditions that:

- (i) The Certificate Holder undertakes to comply with the Rules Governing The AGA's Product Certification Scheme (hereafter called the Rules Governing);
- (ii) This Certificate remains the property of the AGA; and
- (iii) The AGA reserves the right to cancel this Certificate in accordance with the Rules Governing, and in such an event the Certificate Holder undertakes to surrender the Certificate to the AGA upon request.




Client Manager


Certificate Authorised

Page 1 of 3

Certificate first issued: **22 January 2002**

Certificate No: **6132**

This copy valid from: **14 November 2017**

Refer specification issue: **10**

QF 714/N11
(non JAS-ANZ)

This Certificate issued by The Australian Gas Association ABN 98 004 206 044



CERTIFICATE OF CONFORMITY

Product Conformity Scheme (PCS)-Type Test Certification

Australian Certification Services Pty Ltd hereby certifies that a sample/s of the product/s as identified in the product schedule and submitted by;

Austworld Commodities Pty Ltd

Trading as Austworld Commodities Pty Ltd

Has been examined and found to be in conformity with the requirements of the Standard/s referred to below:

Evaluated to:	AS/NZS 5601.1:2013 Gas installations Part 1: General installations Table 4.1 AS 3688:2016 Water supply and gas systems—Metallic fittings and end connectors
Product Type:	Press Fit Fittings
Product Description:	Range of Copper/Copper Alloy Press-Fit Fittings DN15 to DN50 with included HNBR O Ring (Yellow) and threaded adaptors designed for use with Copper Tube to AS 1432 and installed utilising Austworld authorised Tools
Brand:	LD

The Type Test Certificate Holder shall comply with the rules and procedures of the Product Conformity Scheme for those products manufactured identically to the sample/s examined conforming to the Standard. The Type Test Certificate only covers the products identified on the product schedule;

Paul Greig General Manager

Issue Date:	22 nd April 2021
Initial Issue Date:	22 nd April 2021
Expiry Date:	21 st April 2026

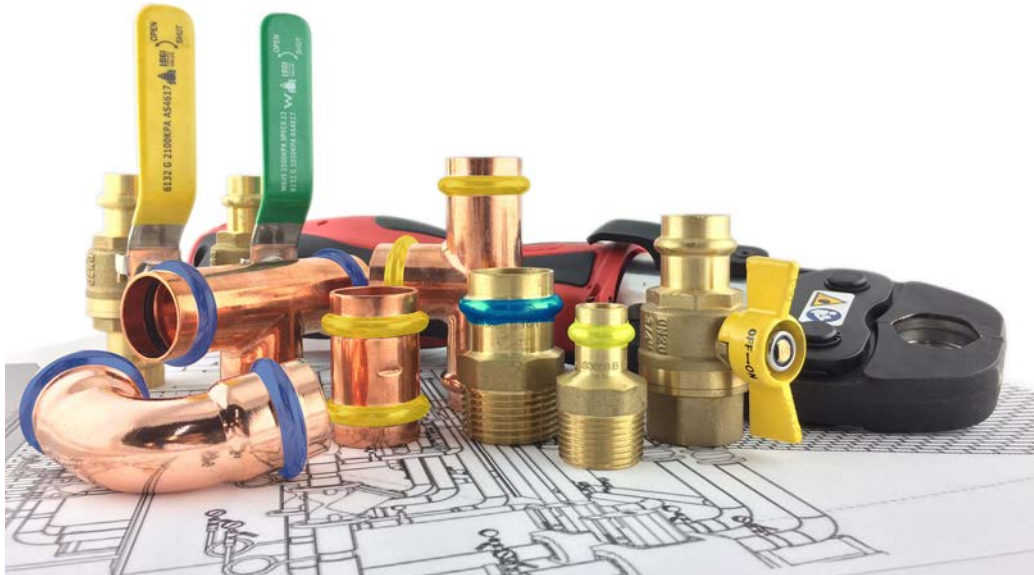
Certificate No.: 4065

This certificate remains the property of Australian Certification Services Pty Ltd

The Product Conformity Scheme (PCS)—Type Test Certification is a conformity assessment scheme based on ISO 17067 (Scheme Type 1a)



Warranty



For full details of Austworld warranty, please see www.austworld.com.au/warranty

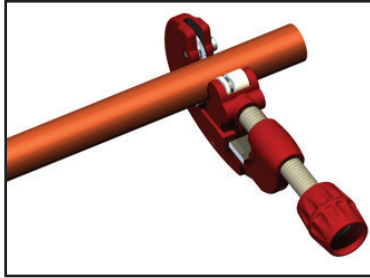
Metpress fittings are warranted against defective manufacturing for 25 years on fittings and 5 years on ball valves from date of purchase. Austworld will repair or replace any materials found to be faulty if fittings have been installed with type A and B copper tube in accordance with AS1432.

The warranty does not cover damage from incorrect installation, nor instances where competitor fittings have caused non-compliant conditions. The warranty does not cover faults arising from incorrect installations and faults arising from competitor fittings used on the same installation.

CAUTION: Product data, design details, performance figures, advice and other information given herein (the "Information") is provided only as a guide to available information. Austworld does not accept any liability whatsoever (including arising from negligence) for the accuracy of the information and for injuries, expense or loss, which may arise as a result of the use of the Information by the recipient.

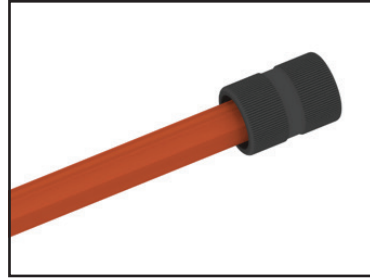
Installation Instructions

Please **FOLLOW** all installation steps to ensure **CORRECT INSTALLATION** of product
 For use with Viega®, Rothenberger®, KemPress®, REMS, NOVOPRESS & V-profile tools only.



Step 1 - Piping

All pipe ends need to be cut square, be free from defects (especially over the insertion length) and both on the inside and outside diameters.



Step 2 - Pipe Ends

Deburr the pipe ends internally and externally to prevent damage to the O-rings.

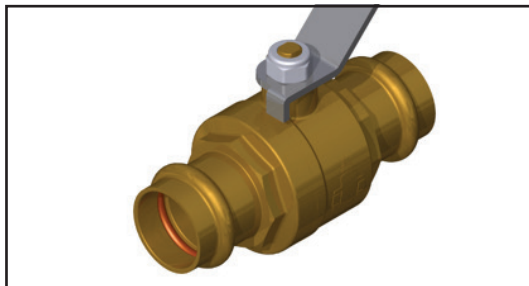
Note:
 Copper pipe must be free from defects and in good condition.



Step 3 - Measure

Measure and mark the pipe according to the table below. This is to ensure that the pipe has been inserted to the correct depth within the fittings.

Nominal Size	Depth (mm)
15	19
20	23
25	24



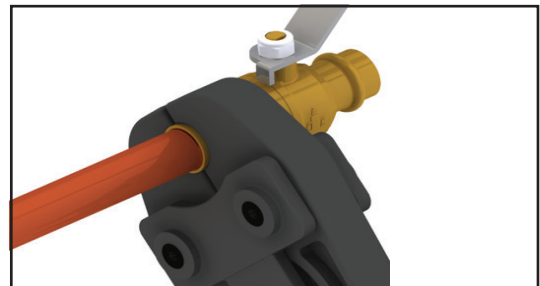
Step 4 - Checking

Inspect the O-Rings are correctly positioned and the ends are free from swarf and debris.

Note:
 Inspect the valves or fittings to ensure that you are using the correct valve for the application.

*** ANY DEBRIS OR FOREIGN MATTER MAY CAUSE DAMAGE TO THE O-RINGS**

Fluid	O-Ring Colour
Water	Black / Brown
Gas	Yellow



Step 5 - Piping

Hold the valve and fitting true and square to the pipe and insert to the marked insertion depth line.

Align the crimp jaws so that the raised section on the crimp end locates into the groove on the crimp tool jaws and crimp according to manufactures instructions.

Attention!

Metpress fittings have a specially designed O-Rings. To ensure that the product has been correctly pressed, please visually inspect every joint.

Installation Instructions

Spacing Requirements

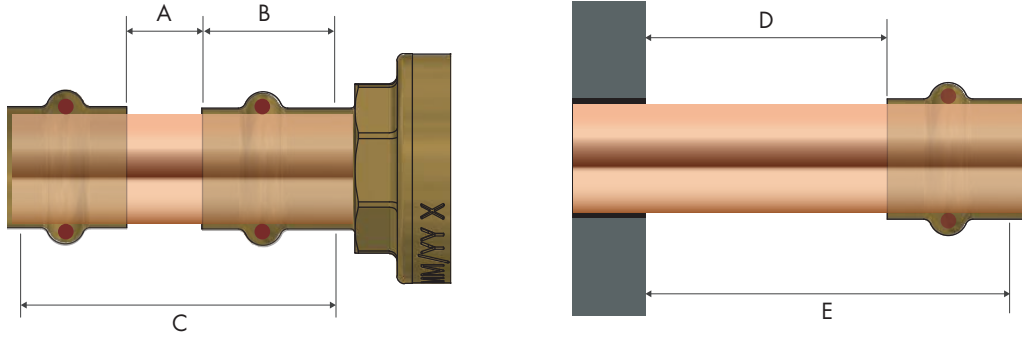


Table shows the minimum distances required between a press joint and other objects

Nominal Size	Pipe OD (MM)	A(MM)	B(MM)	C(MM)	D(MM)	E(MM)
15	12.70	10	19	54	63	85
20	19.05	10	23	62	63	89
25	25.40	10	24	64	63	90
32	31.75	20	26	78	92	121
40	38.10	20	32	90	92	127
50	50.80	20	40	112	92	139

Brazing Near Fittings

Brazing or soldering near to MetPress joints should be avoided if as it may result in damage to the O-Rings. The table below states the minimum distance away from the press joint.

Tube Size	DN15	DN20	DN25	DN32	DN40	DN50
Minimum Clearance to Existing Connection (MM)	350	500	650	800	1000	1300
Minimum Clearance to Existing Brazed Fittings (MM)	10	10	10	10	10	10

In situations where the distances in the table are not possible, then adequate measures must be taken to protect the valve or fitting, must be kept cool and guarded from heat.

Frequently Asked Questions

Q. Do I need to lubricate the O-Ring?

A. *The O-Ring is pre-lubricated. Using additional lubricants could reduce its longevity and void the warranty. Please take correct care when the copper tube is inserted to ensure the O-Ring does not roll or dislodged.*

Q. What grades or types of copper tube do the fittings suit?

A. *Types A and B copper tubes comply with AS 1432. Annealed (ANN), Bendable Quality (BQ) and HardDrawn (HD)*

Q. When using fittings with older pipes, what surface preparation is required?

A. *The surface can be prepared as if it were a brand new pipe.*

Q. Can press fittings be placed in the ground?

A. *Yes, but the tube and fittings must be protected when installed in any corrosive or acidic environment, as per regulatory requirements. This includes possible ground water exposure.*

Q. Am I able to use other tools to crimp a Metpress fitting?

A. *Metpress fittings use a V profile and are compatible with the following tools and jaws: Viega®, Rothenberger®, KemPress®, REMS, NOVOPRESS & V-profile tools only.*

Q. Can Metpress fittings be dismantled and reused?

A. *No, the fitting is permanent once pressed.*

Q. Will I be able to rotate a Metpress fitting once installed?

A. *No, a Metpress fitting cannot be rotated once pressed.*

Q. Can the O-rings from water and gas fittings be swapped?

A. *Swapping the O-ring increases the risk of damage. They are not designed to be interchanged.*

Q. What are the application limitations, where can't it be used?

A. *It cannot be used where pressures are greater than those recommended or where corrosive fluids and gases need to be transmitted.*

Q. What are benefits of the Metpress system?

A. *The Metpress system is fast, reliable and designed to meet Australian Standards.*

Q. When using with older pipes, how do you prepare the surface?

A. *The surface should be prepared in the same way as with new pipe. And provided there is no corrosion, the tube dimensions comply with AS 1432 (type A & B) and the fittings are installed correctly, there are no warranty issues. Note: Warranty is limited to faults due to the manufacturing defects of the fittings and not incorrect installation or installation on faulty or corroded pipe.*



AUSTRALIA'S FAMILY OF TRUSTED PLUMBING SOLUTIONS

austworld.com.au

1300 780 430

info@austworld.com.au

