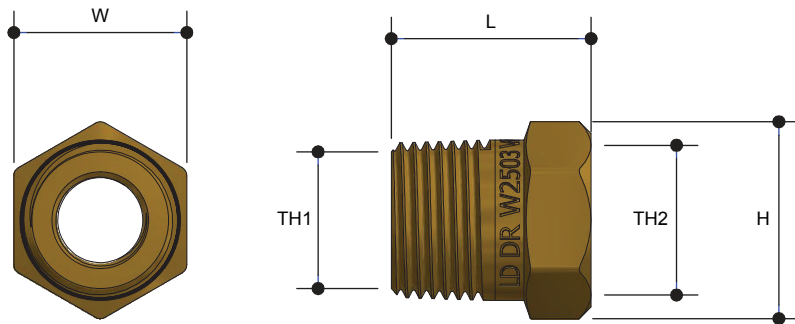


SCREWED BRASSWARE

Bush Reducing Lead Free

Product Specifications



Specifications

Maximum Working Temperature 1°C to 95°C

Maximum Pressure Rating 1600kPa

Sizing Chart (MM)

	L	H	W	TH1	TH2
AW327LF	14	16	14	R 1/4"	Rp 1/8"
AW328LF	21	20	18	R 3/8"	Rp 1/8"
AW329LF	21	20	18	R 3/8"	Rp 1/4"
AW330LF	21	25	22	R 1/2"	Rp 1/8"
AW331LF	20	25	22	R 1/2"	Rp 1/4"
AW332LF	20	23	22	R 1/2"	Rp 3/8"
AW332CLF*	20	23	22	R 1/2"	Rp 3/8"
AW338LF	22	31	27	R 3/4"	Rp 1/8"
AW339LF	22	31	27	R 3/4"	Rp 1/4"
AW336LF	22	31	27	R 3/4"	Rp 1/2"
AW336NBLF	22	31	27	R 3/4"	Rp 1/2"
AW337LF*	22	31	27	R 3/4"	Rp 1/2"
AW341LF	24	34	36	R 3/4"	Rp 1/2"
AW342LF	24	38	34	R 1"	Rp 3/4"
AW343LF	32	46	43	R 1 1/4"	Rp 1/2"

* Chrome Plated

Features

Watermark Lead Free Approved

Tested and Certified to AS 3688



Material Chart

Part	Material
Bush	DR Lead Free Brass

	L	H	W	TH1	TH2
AW344LF	30	48	43	R 1 1/4"	Rp 3/4"
AW345LF	22	31	27	R 1 1/4"	Rp 1"
AW347LF	27	52	49	R 1 1/2"	Rp 3/4"
AW348LF	32	52	49	R 1 1/2"	Rp 1"
AW349LF	32	52	49	R 1 1/2"	Rp 1 1/4"
AW352LF	32	65	61	R 2"	Rp 3/4"
AW353LF	36	66	61	R 2"	Rp 1"
AW354LF	33	65	60	R 2"	Rp 1 1/4"
AW355LF	36	65	61	R 2"	Rp 1 1/2"
AW356LF	43	97	90	R 3"	Rp 2 1/2"
AW357LF	48	120	114	R 4"	Rp 2"
AW358LF	48	120	114	R 4"	Rp 2 1/2"
AW359LF	48	120	114	R 4"	Rp 3"

For more information on Metforge, contact:

Austworld 15 Activity Crescent, Molendinar, Queensland 4214 Australia

P. 1300 780 430

F. 1300 780 441

E. info@austworld.com.au

Austworld Pty Ltd. All rights reserved 2018. Austworld and Metforge are registered trade mark belonging to Austworld Pty Ltd.

