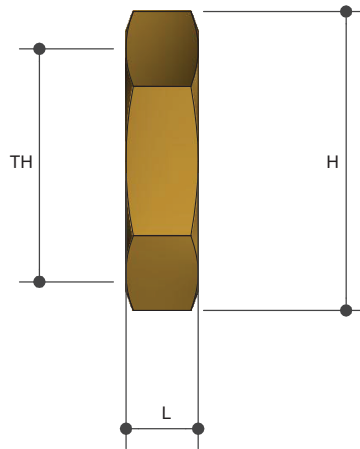
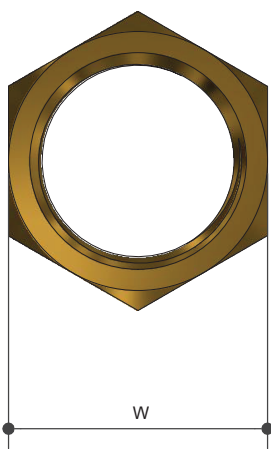


# SCREWED BRASSWARE

## Lock Nut

### Product Specifications



### Specifications

Working Temperature 1°C - 95°C  
Maximum Pressure Rating 1600kPa

### Sizing Chart (MM)

|          | L | H  | W  | TH       |
|----------|---|----|----|----------|
| AW4997   | 5 | 16 | 14 | G 1/8"   |
| AW4998   | 6 | 19 | 17 | G 1/4"   |
| AW4999   | 6 | 24 | 21 | G 3/8"   |
| AW5000   | 6 | 29 | 26 | G 1/2"   |
| AW5000NB | 6 | 29 | 26 | G 1/2"   |
| AW5000C* | 6 | 29 | 26 | G 1/2"   |
| AW5001   | 7 | 35 | 31 | G 3/4"   |
| AW5001C* | 7 | 35 | 31 | G 3/4"   |
| AW5002   | 7 | 44 | 39 | G 1"     |
| AW5003   | 9 | 50 | 47 | G 1 1/4" |
| AW5004   | 9 | 62 | 54 | G 1 1/2" |
| AW5005   | 9 | 71 | 67 | G 2"     |

\* Chrome Plated

### Features

Watermark Approved  
Brass and Chrome Finish  
Tested and Certified to AS 3688



### Material Chart

| Part | Material |
|------|----------|
| Nut  | Brass    |

For more information on Metforge, contact:  
Austworld 15 Activity Crescent, Molendinar, Queensland 4214 Australia  
P. 1300 780 430 F. 1300 780 441 E. info@austworld.com.au

Austworld Pty Ltd. All rights reserved 2018. Austworld and Metforge are registered trade mark belonging to Austworld Pty Ltd.

